

Anti-CD32b Antibody

Rabbit polyclonal antibody to CD32b
Catalog # AP61036

Product Information

Application	WB
Primary Accession	P31994
Reactivity	Human, Mouse, Rat
Host	Rabbit
Clonality	Polyclonal

Additional Information

Other Names	CD32; FCG2; IGFR2; Low affinity immunoglobulin gamma Fc region receptor II-b; IgG Fc receptor II-b; CDw32; Fc-gamma RII-b; Fc-gamma-RIIb; FcRII-b; CD32
Target/Specificity	KLH-conjugated synthetic peptide encompassing a sequence within the C-term region of human CD32b. The exact sequence is proprietary.
Dilution	WB--WB (1/500 - 1/1000)
Format	Liquid in 0.42% Potassium phosphate, 0.87% Sodium chloride, pH 7.3, 30% glycerol, and 0.09% (W/V) sodium azide.
Storage	Store at -20 °C. Stable for 12 months from date of receipt

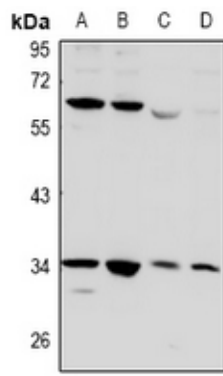
Protein Information

Background

KLH-conjugated synthetic peptide encompassing a sequence within the C-term region of human CD32b. The exact sequence is proprietary.

Images

Western blot analysis of CD32b expression in PC12 (A), SP20 (B), THP1 (C), MCF7 (D) whole cell lysates.



Please note: All products are 'FOR RESEARCH USE ONLY. NOT FOR USE IN DIAGNOSTIC OR THERAPEUTIC PROCEDURES'.