

Anti-Contactin 1 Antibody

Rabbit polyclonal antibody to Contactin 1
Catalog # AP61029

Product Information

Application	WB
Primary Accession	Q12860
Other Accession	P12960
Reactivity	Human, Mouse, Rat
Host	Rabbit
Clonality	Polyclonal
Calculated MW	113320

Additional Information

Gene ID	1272
Other Names	Contactin-1; Glycoprotein gp135; Neural cell surface protein F3
Target/Specificity	KLH-conjugated synthetic peptide encompassing a sequence within the N-term region of human Contactin 1. The exact sequence is proprietary.
Dilution	WB~~WB (1/500 - 1/1000)
Format	Liquid in 0.42% Potassium phosphate, 0.87% Sodium chloride, pH 7.3, 30% glycerol, and 0.09% (W/V) sodium azide.
Storage	Store at -20 °C.Stable for 12 months from date of receipt

Protein Information

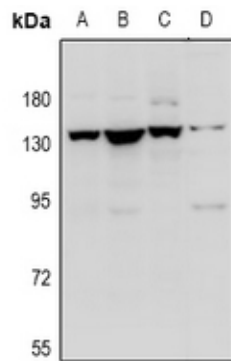
Name	CNTN1
Function	Contactins mediate cell surface interactions during nervous system development. Involved in the formation of paranodal axo-glial junctions in myelinated peripheral nerves and in the signaling between axons and myelinating glial cells via its association with CNTNAP1. Participates in oligodendrocytes generation by acting as a ligand of NOTCH1. Its association with NOTCH1 promotes NOTCH1 activation through the released notch intracellular domain (NICD) and subsequent translocation to the nucleus. Interaction with TNR induces a repulsion of neurons and an inhibition of neurite outgrowth (By similarity).
Cellular Location	[Isoform 1]: Cell membrane; Lipid-anchor, GPI- anchor; Extracellular side
Tissue Location	Strongly expressed in brain and in neuroblastoma and retinoblastoma cell lines. Lower levels of expression in lung, pancreas, kidney and skeletal

muscle.

Background

KLH-conjugated synthetic peptide encompassing a sequence within the N-term region of human Contactin 1. The exact sequence is proprietary.

Images



Western blot analysis of Contactin 1 expression in A549 (A), HEK293T (B), C6 (C), MEF (D) whole cell lysates.

Please note: All products are 'FOR RESEARCH USE ONLY. NOT FOR USE IN DIAGNOSTIC OR THERAPEUTIC PROCEDURES'.