

# Anti-CD272 Antibody

Rabbit polyclonal antibody to CD272

Catalog # AP61027

## Product Information

---

Application	WB
Primary Accession	<a href="#">Q7Z6A9</a>
Other Accession	<a href="#">Q7TSA3</a>
Reactivity	Human, Mouse, Rat
Host	Rabbit
Clonality	Polyclonal
Calculated MW	32834

## Additional Information

---

Gene ID	151888
Other Names	B- and T-lymphocyte attenuator; B- and T-lymphocyte-associated protein; CD272
Target/Specificity	Recognizes endogenous levels of CD272 protein.
Dilution	WB~~WB (1/500 - 1/1000)
Format	Liquid in 0.42% Potassium phosphate, 0.87% Sodium chloride, pH 7.3, 30% glycerol, and 0.09% (W/V) sodium azide.
Storage	Store at -20 °C.Stable for 12 months from date of receipt

## Protein Information

---

Name	BTLA {ECO:0000303   PubMed:12796776, ECO:0000312   HGNC:HGNC:21087}
Function	Inhibitory receptor on lymphocytes that negatively regulates antigen receptor signaling via PTPN6/SHP-1 and PTPN11/SHP-2 (PubMed: <a href="#">12796776</a> , PubMed: <a href="#">14652006</a> , PubMed: <a href="#">15568026</a> , PubMed: <a href="#">18193050</a> ). May interact in cis (on the same cell) or in trans (on other cells) with TNFRSF14 (PubMed: <a href="#">19915044</a> ). In cis interactions, appears to play an immune regulatory role inhibiting in trans interactions in naive T cells to maintain a resting state. In trans interactions, can predominate during adaptive immune response to provide survival signals to effector T cells (PubMed: <a href="#">19915044</a> ).
Cellular Location	Cell membrane; Single-pass type I membrane protein

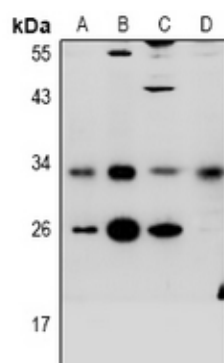
## Background

---

KLH-conjugated synthetic peptide encompassing a sequence within the center region of human CD272. The exact sequence is proprietary.

## Images

---



Western blot analysis of CD272 expression in HCT116 (A), LO2 (B), C6 (C), CT26 (D) whole cell lysates.

Please note: All products are 'FOR RESEARCH USE ONLY. NOT FOR USE IN DIAGNOSTIC OR THERAPEUTIC PROCEDURES'.