

Anti-KLF12 Antibody

Rabbit polyclonal antibody to KLF12
Catalog # AP61025

Product Information

Application	WB
Primary Accession	Q9Y4X4
Other Accession	O35738
Reactivity	Human, Mouse, Rat
Host	Rabbit
Clonality	Polyclonal
Calculated MW	44240

Additional Information

Gene ID	11278
Other Names	AP2REP; Krueppel-like factor 12; Transcriptional repressor AP-2rep
Target/Specificity	KLH-conjugated synthetic peptide encompassing a sequence within the center region of human KLF12. The exact sequence is proprietary.
Dilution	WB~~WB (1/500 - 1/1000)
Format	Liquid in 0.42% Potassium phosphate, 0.87% Sodium chloride, pH 7.3, 30% glycerol, and 0.09% (W/V) sodium azide.
Storage	Store at -20 °C.Stable for 12 months from date of receipt

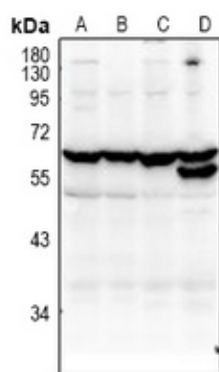
Protein Information

Name	KLF12
Synonyms	AP2REP
Function	Confers strong transcriptional repression to the AP-2-alpha gene. Binds to a regulatory element (A32) in the AP-2-alpha gene promoter.
Cellular Location	Nucleus.

Background

KLH-conjugated synthetic peptide encompassing a sequence within the center region of human KLF12. The exact sequence is proprietary.

Images



Western blot analysis of KLF12 expression in A549 (A), MCF7 (B), PC12 (C), CT26 (D) whole cell lysates.

Please note: All products are 'FOR RESEARCH USE ONLY. NOT FOR USE IN DIAGNOSTIC OR THERAPEUTIC PROCEDURES'.