

# Anti-SRPK3 Antibody

Rabbit polyclonal antibody to SRPK3

Catalog # AP60999

## Product Information

---

Application	WB
Primary Accession	<a href="#">Q9UPE1</a>
Other Accession	<a href="#">Q9Z0G2</a>
Reactivity	Human, Mouse, Rat, Pig
Host	Rabbit
Clonality	Polyclonal
Calculated MW	62014

## Additional Information

---

Gene ID	26576
Other Names	MSSK1; STK23; SRSF protein kinase 3; Muscle-specific serine kinase 1; MSSK-1; Serine/arginine-rich protein-specific kinase 3; SR-protein-specific kinase 3; Serine/threonine-protein kinase 23
Target/Specificity	KLH-conjugated synthetic peptide encompassing a sequence within the center region of human SRPK3. The exact sequence is proprietary.
Dilution	WB~~WB (1/500 - 1/1000)
Format	Liquid in 0.42% Potassium phosphate, 0.87% Sodium chloride, pH 7.3, 30% glycerol, and 0.09% (W/V) sodium azide.
Storage	Store at -20 °C.Stable for 12 months from date of receipt

## Protein Information

---

Name	SRPK3
Synonyms	MSSK1, STK23
Function	Serine/arginine-rich protein-specific kinase which specifically phosphorylates its substrates at serine residues located in regions rich in arginine/serine dipeptides, known as RS domains. Phosphorylates the SR splicing factor SRSF1 and the lamin-B receptor (LBR) in vitro. Required for normal muscle development (By similarity).
Cellular Location	Nucleus. Cytoplasm
Tissue Location	Expressed in skeletal and heart muscle (PubMed:11063724, PubMed:39073169). Also expressed in the fetal brain

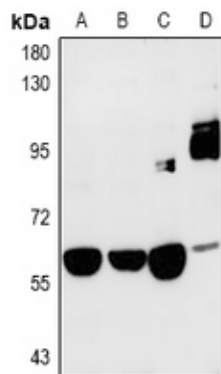
## Background

---

KLH-conjugated synthetic peptide encompassing a sequence within the center region of human SRPK3. The exact sequence is proprietary.

## Images

---



Western blot analysis of SRPK3 expression in PC3 (A), H1792 (B), PC12 (C), mouse heart (D) whole cell lysates.

Please note: All products are 'FOR RESEARCH USE ONLY. NOT FOR USE IN DIAGNOSTIC OR THERAPEUTIC PROCEDURES'.