

Anti-GDF7 Antibody

Rabbit polyclonal antibody to GDF7

Catalog # AP60960

Product Information

Application	WB
Primary Accession	Q7Z4P5
Reactivity	Human
Host	Rabbit
Clonality	Polyclonal
Calculated MW	46950

Additional Information

Gene ID	151449
Other Names	Growth/differentiation factor 7; GDF-7
Target/Specificity	KLH-conjugated synthetic peptide encompassing a sequence within the center region of human GDF7. The exact sequence is proprietary.
Dilution	WB~~WB (1/500 - 1/1000)
Format	Liquid in 0.42% Potassium phosphate, 0.87% Sodium chloride, pH 7.3, 30% glycerol, and 0.09% (W/V) sodium azide.
Storage	Store at -20 °C.Stable for 12 months from date of receipt

Protein Information

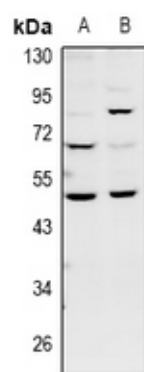
Name	GDF7
Function	May play an active role in the motor area of the primate neocortex.
Cellular Location	Secreted.

Background

KLH-conjugated synthetic peptide encompassing a sequence within the center region of human GDF7. The exact sequence is proprietary.

Images

Western blot analysis of GDF7 expression in HCT116 (A),



HepG2 (B) whole cell lysates.

Please note: All products are 'FOR RESEARCH USE ONLY. NOT FOR USE IN DIAGNOSTIC OR THERAPEUTIC PROCEDURES'.