

# Anti-TAB1 (pS438) Antibody

Rabbit polyclonal antibody to TAB1 (pS438)

Catalog # AP60935

## Product Information

Application	WB
Primary Accession	<a href="#">Q15750</a>
Other Accession	<a href="#">Q8CF89</a>
Reactivity	Human, Mouse, Rat
Host	Rabbit
Clonality	Polyclonal
Calculated MW	54644

## Additional Information

Gene ID	10454
Other Names	MAP3K7IP1; TGF-beta-activated kinase 1 and MAP3K7-binding protein 1; Mitogen-activated protein kinase kinase kinase 7-interacting protein 1; TGF-beta-activated kinase 1-binding protein 1; TAK1-binding protein 1
Target/Specificity	KLH-conjugated synthetic peptide encompassing a sequence within the C-term region of human TAB1. The exact sequence is proprietary.
Dilution	WB~~WB (1/500 - 1/1000)
Format	Liquid in 0.42% Potassium phosphate, 0.87% Sodium chloride, pH 7.3, 30% glycerol, and 0.09% (W/V) sodium azide.
Storage	Store at -20 °C.Stable for 12 months from date of receipt

## Protein Information

Name	TAB1
Synonyms	MAP3K7IP1
Function	Key adapter protein that plays an essential role in JNK and NF-kappa-B activation and proinflammatory cytokines production in response to stimulation with TLRs and cytokines (PubMed: <a href="#">22307082</a> , PubMed: <a href="#">24403530</a> ). Mechanistically, associates with the catalytic domain of MAP3K7/TAK1 to trigger MAP3K7/TAK1 autophosphorylation leading to its full activation (PubMed: <a href="#">10838074</a> , PubMed: <a href="#">25260751</a> , PubMed: <a href="#">37832545</a> ). Similarly, associates with MAPK14 and triggers its autophosphorylation and subsequent activation (PubMed: <a href="#">11847341</a> , PubMed: <a href="#">29229647</a> ). In turn, MAPK14 phosphorylates TAB1 and inhibits MAP3K7/TAK1 activation in a feedback control mechanism (PubMed: <a href="#">14592977</a> ). Also plays a role in recruiting

MAPK14 to the TAK1 complex for the phosphorylation of the TAB2 and TAB3 regulatory subunits (PubMed:[18021073](#)).

## Cellular Location

Cytoplasm, cytosol. Endoplasmic reticulum membrane; Peripheral membrane protein; Cytoplasmic side. Note=Recruited to the endoplasmic reticulum following interaction with STING1

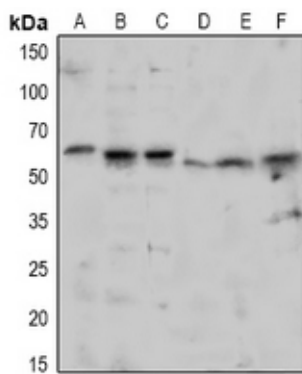
## Tissue Location

Ubiquitous..

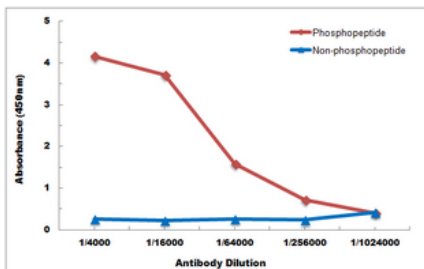
## Background

KLH-conjugated synthetic peptide encompassing a sequence within the C-term region of human TAB1. The exact sequence is proprietary.

## Images



Western blot analysis of TAB1 (pS438) expression in Hela (A), HEK293T (B), MCF7 (C), mouse eye (D), mouse brain (E), rat brain (F) whole cell lysates.



Direct ELISA antibody dose-response curve using Anti-TAB1 (pS438) Antibody. Antigen (phosphopeptide and non-phosphopeptide) concentration is 5 ug/ml. Goat Anti-Rabbit IgG (H&L) - HRP was used as the secondary antibody, and signal was developed by TMB substrate.

Please note: All products are 'FOR RESEARCH USE ONLY. NOT FOR USE IN DIAGNOSTIC OR THERAPEUTIC PROCEDURES'.