

Anti-DAP Kinase 1 (pS736) Antibody

Rabbit polyclonal antibody to DAP Kinase 1 (pS736)

Catalog # AP60930

Product Information

Application	WB
Primary Accession	P53355
Other Accession	Q80YE7
Reactivity	Human, Mouse, Rat
Host	Rabbit
Clonality	Polyclonal

Additional Information

Other Names	DAPK; Death-associated protein kinase 1; DAP kinase 1
Target/Specificity	KLH-conjugated synthetic peptide encompassing a sequence within the center region of human DAP Kinase 1. The exact sequence is proprietary.
Dilution	WB~~WB (1/500 - 1/1000)
Format	Liquid in 0.42% Potassium phosphate, 0.87% Sodium chloride, pH 7.3, 30% glycerol, and 0.09% (W/V) sodium azide.
Storage	Store at -20 °C. Stable for 12 months from date of receipt

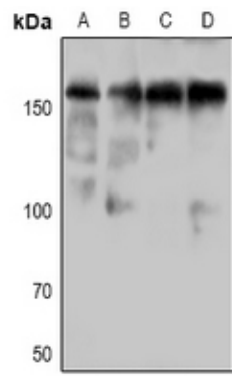
Protein Information

Background

KLH-conjugated synthetic peptide encompassing a sequence within the center region of human DAP Kinase 1. The exact sequence is proprietary.

Images

Western blot analysis of DAP Kinase 1 (pS736) expression in HEK293T (A), CT26 (B), NIH3T3 (C), PC12 (D) whole cell lysates.



Please note: All products are 'FOR RESEARCH USE ONLY. NOT FOR USE IN DIAGNOSTIC OR THERAPEUTIC PROCEDURES'.