

Anti-CDC25A (pS82) Antibody

Rabbit polyclonal antibody to CDC25A (pS82)
Catalog # AP60928

Product Information

Application	WB
Primary Accession	P30304
Other Accession	P48964
Reactivity	Human, Mouse, Rat
Host	Rabbit
Clonality	Polyclonal
Calculated MW	59087

Additional Information

Gene ID	993
Other Names	M-phase inducer phosphatase 1; Dual specificity phosphatase Cdc25A
Target/Specificity	KLH-conjugated synthetic peptide encompassing a sequence within the N-term region of human CDC25A. The exact sequence is proprietary.
Dilution	WB~~WB (1/500 - 1/1000)
Format	Liquid in 0.42% Potassium phosphate, 0.87% Sodium chloride, pH 7.3, 30% glycerol, and 0.09% (W/V) sodium azide.
Storage	Store at -20 °C. Stable for 12 months from date of receipt

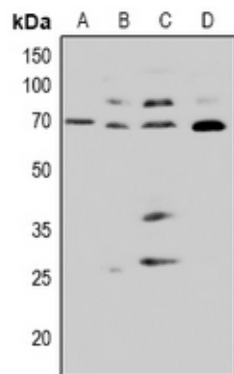
Protein Information

Name	CDC25A
Function	Tyrosine protein phosphatase which functions as a dosage- dependent inducer of mitotic progression (PubMed: 12676925 , PubMed: 14559997 , PubMed: 1836978 , PubMed: 20360007). Directly dephosphorylates CDK1 and stimulates its kinase activity (PubMed: 20360007). Also dephosphorylates CDK2 in complex with cyclin-E, in vitro (PubMed: 20360007).

Background

KLH-conjugated synthetic peptide encompassing a sequence within the N-term region of human CDC25A. The exact sequence is proprietary.

Images



Western blot analysis of CDC25A (pS82) expression in HeLa (A), HCT116 (B), NIH3T3 (C), PC12 (D) whole cell lysates.

Please note: All products are 'FOR RESEARCH USE ONLY. NOT FOR USE IN DIAGNOSTIC OR THERAPEUTIC PROCEDURES'.