

Anti-TWIK3 Antibody

Rabbit polyclonal antibody to TWIK3

Catalog # AP60905

Product Information

Application	WB
Primary Accession	Q9Y2U2
Other Accession	Q9Z2T1
Reactivity	Human, Mouse, Rat
Host	Rabbit
Clonality	Polyclonal
Calculated MW	31947

Additional Information

Gene ID	10089
Other Names	Potassium channel subfamily K member 7
Target/Specificity	KLH-conjugated synthetic peptide encompassing a sequence within the C-term region of human TWIK3. The exact sequence is proprietary.
Dilution	WB~~WB (1/500 - 1/1000)
Format	Liquid in 0.42% Potassium phosphate, 0.87% Sodium chloride, pH 7.3, 30% glycerol, and 0.09% (W/V) sodium azide.
Storage	Store at -20 °C.Stable for 12 months from date of receipt

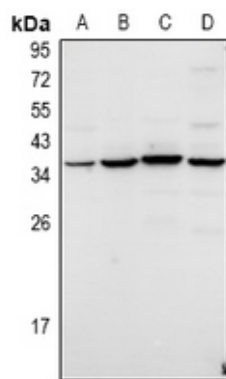
Protein Information

Name	KCNK7
Function	Probable potassium channel subunit. No channel activity observed in vitro as protein remains in the endoplasmic reticulum. May need to associate with an as yet unknown partner in order to reach the plasma membrane.
Cellular Location	Membrane; Multi-pass membrane protein

Background

KLH-conjugated synthetic peptide encompassing a sequence within the C-term region of human TWIK3. The exact sequence is proprietary.

Images



Western blot analysis of TWIK3 expression in HCT116 (A), A549 (B), H9C2 (C), AML12 (D) whole cell lysates.

Please note: All products are 'FOR RESEARCH USE ONLY. NOT FOR USE IN DIAGNOSTIC OR THERAPEUTIC PROCEDURES'.