

Anti-GPR115 Antibody

Rabbit polyclonal antibody to GPR115

Catalog # AP60898

Product Information

Application	WB, IF/IC
Primary Accession	Q8IZF3
Other Accession	Q9D2L6
Reactivity	Human, Mouse, Rat
Host	Rabbit
Clonality	Polyclonal
Calculated MW	77719

Additional Information

Gene ID	221393
Other Names	PGR18; Probable G-protein coupled receptor 115; G-protein coupled receptor PGR18
Target/Specificity	KLH-conjugated synthetic peptide encompassing a sequence within the C-term region of human GPR115. The exact sequence is proprietary.
Dilution	WB~~WB (1/500 - 1/1000), IF/IC (1/100 - 1/500) IF/IC~~N/A
Format	Liquid in 0.42% Potassium phosphate, 0.87% Sodium chloride, pH 7.3, 30% glycerol, and 0.09% (W/V) sodium azide.
Storage	Store at -20 °C.Stable for 12 months from date of receipt

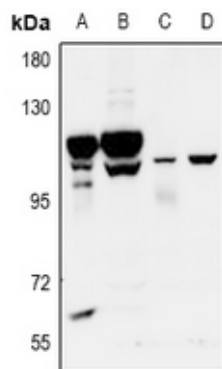
Protein Information

Name	ADGRF4
Synonyms	GPR115, PGR18
Function	Orphan receptor.
Cellular Location	Membrane; Multi-pass membrane protein

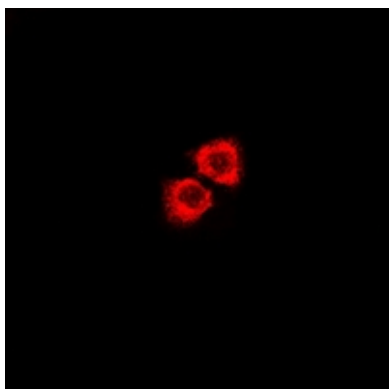
Background

KLH-conjugated synthetic peptide encompassing a sequence within the C-term region of human GPR115. The exact sequence is proprietary.

Images



Western blot analysis of GPR115 expression in BV2 (A), PC12 (B), A549 (C), HepG2 (D) whole cell lysates.



Immunofluorescent analysis of GPR115 staining in LOVO cells. Formalin-fixed cells were permeabilized with 0.1% Triton X-100 in TBS for 5-10 minutes and blocked with 3% BSA-PBS for 30 minutes at room temperature. Cells were probed with the primary antibody in 3% BSA-PBS and incubated overnight at 4 °C in a humidified chamber. Cells were washed with PBST and incubated with Alexa Fluor 647-conjugated secondary antibody (red) in PBS at room temperature in the dark.

Please note: All products are 'FOR RESEARCH USE ONLY. NOT FOR USE IN DIAGNOSTIC OR THERAPEUTIC PROCEDURES'.