

Anti-GDI2 Antibody

Rabbit polyclonal antibody to GDI2

Catalog # AP60863

Product Information

Application	WB, IHC
Primary Accession	P50395
Other Accession	Q61598
Reactivity	Human, Mouse, Rat, Pig, Bovine, Drosophila
Host	Rabbit
Clonality	Polyclonal
Calculated MW	50663

Additional Information

Gene ID	2665
Other Names	RABGDIB; Rab GDP dissociation inhibitor beta; Rab GDI beta; Guanosine diphosphate dissociation inhibitor 2; GDI-2
Target/Specificity	KLH-conjugated synthetic peptide encompassing a sequence within the C-term region of human GDI2. The exact sequence is proprietary.
Dilution	WB~~WB (1/500 - 1/2000), IHC (1/50 - 1/200) IHC~~WB (1/500 - 1/2000), IHC (1/50 - 1/200)
Format	Liquid in 0.42% Potassium phosphate, 0.87% Sodium chloride, pH 7.3, 30% glycerol, and 0.09% (W/V) sodium azide.
Storage	Store at -20 °C.Stable for 12 months from date of receipt

Protein Information

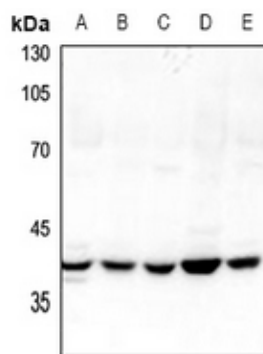
Name	GDI2
Synonyms	RABGDIB
Function	GDP-dissociation inhibitor preventing the GDP to GTP exchange of most Rab proteins. By keeping these small GTPases in their inactive GDP-bound form regulates intracellular membrane trafficking (PubMed: 25860027). Negatively regulates protein transport to the cilium and ciliogenesis through the inhibition of RAB8A (PubMed: 25860027).
Cellular Location	Cytoplasm. Membrane; Peripheral membrane protein. Golgi apparatus, trans-Golgi network Ubiquitous..

Tissue Location

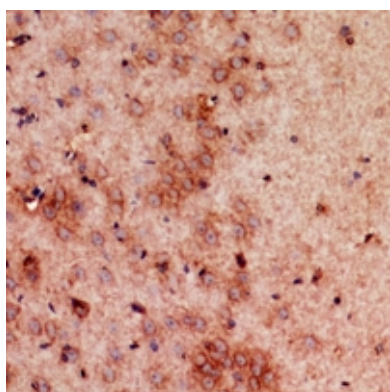
Background

KLH-conjugated synthetic peptide encompassing a sequence within the C-term region of human GDI2. The exact sequence is proprietary.

Images



Western blot analysis of GDI2 expression in A549 (A), HeLa (B), LOVO (C), BV2 (D), PC12 (E) whole cell lysates.



Immunohistochemical analysis of GDI2 staining in mouse brain formalin fixed paraffin embedded tissue section. The section was pre-treated using heat mediated antigen retrieval with sodium citrate buffer (pH 6.0). The section was then incubated with the antibody at room temperature and detected using an HRP conjugated compact polymer system. DAB was used as the chromogen. The section was then counterstained with haematoxylin and mounted with DPX.

Please note: All products are 'FOR RESEARCH USE ONLY. NOT FOR USE IN DIAGNOSTIC OR THERAPEUTIC PROCEDURES'.