

Anti-RFC1 Antibody

Rabbit polyclonal antibody to RFC1

Catalog # AP60861

Product Information

Application	WB
Primary Accession	P35251
Other Accession	P35601
Reactivity	Human, Mouse, Rat
Host	Rabbit
Clonality	Polyclonal
Calculated MW	128255

Additional Information

Gene ID	5981
Other Names	RFC140; Replication factor C subunit 1; Activator 1 140 kDa subunit; A1 140 kDa subunit; Activator 1 large subunit; Activator 1 subunit 1; DNA-binding protein PO-GA; Replication factor C 140 kDa subunit; RF-C 140 kDa subunit; RFC140; Replication factor C large subunit
Target/Specificity	KLH-conjugated synthetic peptide encompassing a sequence within the center region of human RFC1. The exact sequence is proprietary.
Dilution	WB~~WB (1/500 - 1/2000)
Format	Liquid in 0.42% Potassium phosphate, 0.87% Sodium chloride, pH 7.3, 30% glycerol, and 0.09% (W/V) sodium azide.
Storage	Store at -20 °C.Stable for 12 months from date of receipt

Protein Information

Name	RFC1
Synonyms	RFC140
Function	Subunit of the replication factor C (RFC) complex which acts during elongation of primed DNA templates by DNA polymerases delta and epsilon, and is necessary for ATP-dependent loading of proliferating cell nuclear antigen (PCNA) onto primed DNA (PubMed: 9488738). This subunit binds to the primer-template junction. Binds the PO-B transcription element as well as other GA rich DNA sequences. Can bind single- or double-stranded DNA.
Cellular Location	Nucleus.

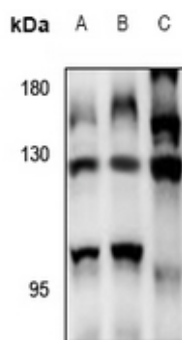
Tissue Location

Wide tissue distribution. Undetectable in placental tissue

Background

KLH-conjugated synthetic peptide encompassing a sequence within the center region of human RFC1. The exact sequence is proprietary.

Images



Western blot analysis of RFC1 expression in BV2 (A), PMVEC (B), A549 (C) whole cell lysates.

Please note: All products are 'FOR RESEARCH USE ONLY. NOT FOR USE IN DIAGNOSTIC OR THERAPEUTIC PROCEDURES'.