

Anti-Alpha-actin Antibody

Rabbit polyclonal antibody to Alpha-actin
Catalog # AP60852

Product Information

Application	WB, IHC
Primary Accession	P68032
Other Accession	P68033
Reactivity	Human, Mouse, Rat, Chicken, Bovine
Host	Rabbit
Clonality	Polyclonal
Calculated MW	42019

Additional Information

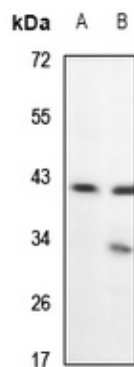
Gene ID	70
Other Names	ACTC; Actin, alpha cardiac muscle 1; Alpha-cardiac actin
Target/Specificity	KLH-conjugated synthetic peptide encompassing a sequence within the N-term region of human Alpha-actin. The exact sequence is proprietary.
Dilution	WB~~WB (1/500 - 1/2000), IHC (1/50 - 1/200) IHC~~WB (1/500 - 1/2000), IHC (1/50 - 1/200)
Format	Liquid in 0.42% Potassium phosphate, 0.87% Sodium chloride, pH 7.3, 30% glycerol, and 0.09% (W/V) sodium azide.
Storage	Store at -20 °C.Stable for 12 months from date of receipt

Protein Information

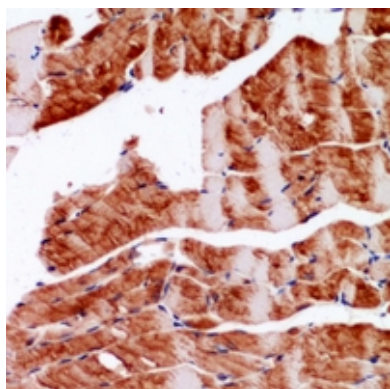
Name	ACTC1
Synonyms	ACTC
Function	Actins are highly conserved proteins that are involved in various types of cell motility and are ubiquitously expressed in all eukaryotic cells.
Cellular Location	Cytoplasm, cytoskeleton.

Background

KLH-conjugated synthetic peptide encompassing a sequence within the N-term region of human Alpha-actin. The exact sequence is proprietary.



Western blot analysis of Alpha-actin expression in C6 (A), AML12 (B) whole cell lysates.



Immunohistochemical analysis of Alpha-actin staining in mouse skeletal muscle formalin fixed paraffin embedded tissue section. The section was pre-treated using heat mediated antigen retrieval with sodium citrate buffer (pH 6.0). The section was then incubated with the antibody at room temperature and detected using an HRP conjugated compact polymer system. DAB was used as the chromogen. The section was then counterstained with haematoxylin and mounted with DPX.

Please note: All products are 'FOR RESEARCH USE ONLY. NOT FOR USE IN DIAGNOSTIC OR THERAPEUTIC PROCEDURES'.