

Anti-ZP2 Antibody

Rabbit polyclonal antibody to ZP2

Catalog # AP60826

Product Information

Application	WB, IHC
Primary Accession	Q05996
Other Accession	P20239
Reactivity	Human, Mouse, Rat
Host	Rabbit
Clonality	Polyclonal
Calculated MW	82357

Additional Information

Gene ID	7783
Other Names	ZPA; Zona pellucida sperm-binding protein 2; Zona pellucida glycoprotein 2; Zp-2; Zona pellucida protein A
Target/Specificity	KLH-conjugated synthetic peptide encompassing a sequence within the center region of human ZP2. The exact sequence is proprietary.
Dilution	WB~~WB (1/500 - 1/2000), IHC (1/50 - 1/200) IHC~~WB (1/500 - 1/2000), IHC (1/50 - 1/200)
Format	Liquid in 0.42% Potassium phosphate, 0.87% Sodium chloride, pH 7.3, 30% glycerol, and 0.09% (W/V) sodium azide.
Storage	Store at -20 °C.Stable for 12 months from date of receipt

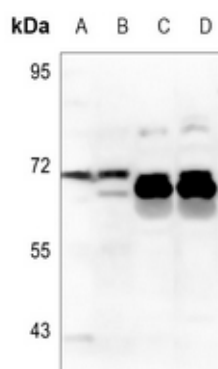
Protein Information

Name	ZP2
Synonyms	ZPA
Function	Component of the zona pellucida, an extracellular matrix surrounding oocytes which mediates sperm binding, induction of the acrosome reaction and prevents post-fertilization polyspermy (PubMed: 29895852). The zona pellucida is composed of 3 to 4 glycoproteins, ZP1, ZP2, ZP3, and ZP4. ZP2 may act as a secondary sperm receptor (PubMed: 29895852).
Cellular Location	[Processed zona pellucida sperm-binding protein 2]; Zona pellucida
Tissue Location	Expressed in oocytes(at protein level).

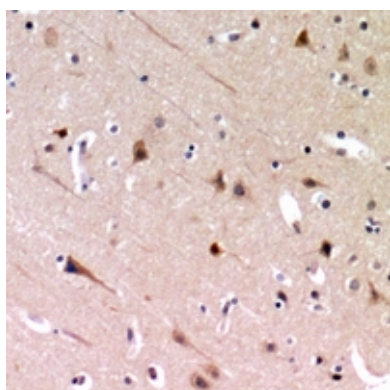
Background

KLH-conjugated synthetic peptide encompassing a sequence within the center region of human ZP2. The exact sequence is proprietary.

Images



Western blot analysis of ZP2 expression in H1792 (A), A549 (B), mouse muscle (C), rat muscle (D) whole cell lysates.



Immunohistochemical analysis of ZP2 staining in human brain formalin fixed paraffin embedded tissue section. The section was pre-treated using heat mediated antigen retrieval with sodium citrate buffer (pH 6.0). The section was then incubated with the antibody at room temperature and detected using an HRP conjugated compact polymer system. DAB was used as the chromogen. The section was then counterstained with haematoxylin and mounted with DPX.

Please note: All products are 'FOR RESEARCH USE ONLY. NOT FOR USE IN DIAGNOSTIC OR THERAPEUTIC PROCEDURES'.