

Anti-Inhibin beta C Antibody

Rabbit polyclonal antibody to Inhibin beta C

Catalog # AP60806

Product Information

Application	WB
Primary Accession	P55103
Reactivity	Human
Host	Rabbit
Clonality	Polyclonal
Calculated MW	38238

Additional Information

Gene ID	3626
Other Names	Inhibin beta C chain; Activin beta-C chain
Target/Specificity	KLH-conjugated synthetic peptide encompassing a sequence within the center region of human Inhibin beta C. The exact sequence is proprietary.
Dilution	WB~~WB (1/500 - 1/1000)
Format	Liquid in 0.42% Potassium phosphate, 0.87% Sodium chloride, pH 7.3, 30% glycerol, and 0.09% (W/V) sodium azide.
Storage	Store at -20 °C.Stable for 12 months from date of receipt

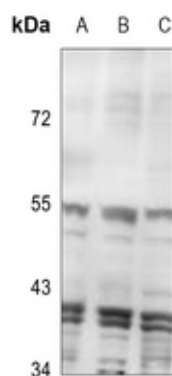
Protein Information

Name	INHBC
Function	Inhibins and activins inhibit and activate, respectively, the secretion of follitropin by the pituitary gland. Inhibins/activins are involved in regulating a number of diverse functions such as hypothalamic and pituitary hormone secretion, gonadal hormone secretion, germ cell development and maturation, erythroid differentiation, insulin secretion, nerve cell survival, embryonic axial development or bone growth, depending on their subunit composition. Inhibins appear to oppose the functions of activins.
Cellular Location	Secreted.
Tissue Location	Expressed in benign prostatic hyperplasia.

Background

KLH-conjugated synthetic peptide encompassing a sequence within the center region of human Inhibin beta C. The exact sequence is proprietary.

Images



Western blot analysis of Inhibin beta C expression in MCF7 (A), PC3 (B), HepG2 (C) whole cell lysates.

Please note: All products are 'FOR RESEARCH USE ONLY. NOT FOR USE IN DIAGNOSTIC OR THERAPEUTIC PROCEDURES'.