

Anti-DPD Antibody

Rabbit polyclonal antibody to DPD
Catalog # AP60792

Product Information

Application	WB
Primary Accession	Q12882
Other Accession	Q8CHR6
Reactivity	Human, Mouse, Rat
Host	Rabbit
Clonality	Polyclonal
Calculated MW	111401

Additional Information

Gene ID	1806
Other Names	Dihydropyrimidine dehydrogenase [NADP(+)]; DHPDHase; DPD; Dihydrothymine dehydrogenase; Dihydrouracil dehydrogenase
Target/Specificity	KLH-conjugated synthetic peptide encompassing a sequence within the center region of human DPD. The exact sequence is proprietary.
Dilution	WB~~WB (1/500 - 1/1000)
Format	Liquid in 0.42% Potassium phosphate, 0.87% Sodium chloride, pH 7.3, 30% glycerol, and 0.09% (W/V) sodium azide.
Storage	Store at -20 °C.Stable for 12 months from date of receipt

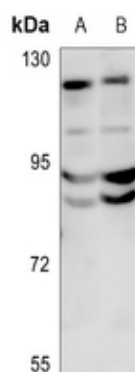
Protein Information

Name	DPYD (HGNC:3012)
Function	Involved in pyrimidine base degradation (PubMed: 1512248). Catalyzes the reduction of uracil and thymine (PubMed: 1512248). Also involved the degradation of the chemotherapeutic drug 5-fluorouracil (PubMed: 1512248).
Cellular Location	Cytoplasm.
Tissue Location	Found in most tissues with greatest activity found in liver and peripheral blood mononuclear cells

Background

KLH-conjugated synthetic peptide encompassing a sequence within the center region of human DPD. The exact sequence is proprietary.

Images



Western blot analysis of DPD expression in mouse liver (A), rat liver (B) whole cell lysates.

Please note: All products are 'FOR RESEARCH USE ONLY. NOT FOR USE IN DIAGNOSTIC OR THERAPEUTIC PROCEDURES'.