

Anti-LIPI Antibody

Rabbit polyclonal antibody to LIPI
Catalog # AP60767

Product Information

Application	WB
Primary Accession	Q6XZB0
Reactivity	Human
Host	Rabbit
Clonality	Polyclonal
Calculated MW	52922

Additional Information

Gene ID	149998
Other Names	LPDL; Lipase member I; LIPI; Cancer/testis antigen 17; CT17; LPD lipase; Membrane-associated phosphatidic acid-selective phospholipase A1-beta; mPA-PLA1 beta
Target/Specificity	KLH-conjugated synthetic peptide encompassing a sequence within the center region of human LIPI. The exact sequence is proprietary.
Dilution	WB~~WB (1/500 - 1/1000)
Format	Liquid in 0.42% Potassium phosphate, 0.87% Sodium chloride, pH 7.3, 30% glycerol, and 0.09% (W/V) sodium azide.
Storage	Store at -20 °C.Stable for 12 months from date of receipt

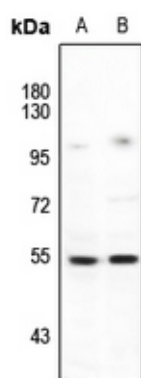
Protein Information

Name	LIPI
Synonyms	LPDL
Function	Hydrolyzes specifically phosphatidic acid (PA) to produce 2- acyl lysophosphatidic acid (LPA; a potent bioactive lipid mediator) and fatty acid. Does not hydrolyze other phospholipids, like phosphatidylserine (PS), phosphatidylcholine (PC) and phosphatidylethanolamine (PE) or triacylglycerol (TG).
Cellular Location	[Isoform 1]: Cell membrane. Secreted Note=May associate with lipid draft.
Tissue Location	Expressed in testis. Expressed exclusively at the connecting piece of the sperm.

Background

KLH-conjugated synthetic peptide encompassing a sequence within the center region of human LIPI. The exact sequence is proprietary.

Images



Western blot analysis of LIPI expression in HeLa (A), PC3 (B) whole cell lysates.

Please note: All products are 'FOR RESEARCH USE ONLY. NOT FOR USE IN DIAGNOSTIC OR THERAPEUTIC PROCEDURES'.