

# Anti-GABRD Antibody

Rabbit polyclonal antibody to GABRD

Catalog # AP60763

## Product Information

Application	WB, IHC
Primary Accession	<a href="#">O14764</a>
Other Accession	<a href="#">P22933</a>
Reactivity	Human, Mouse, Rat
Host	Rabbit
Clonality	Polyclonal
Calculated MW	50708

## Additional Information

Gene ID	2563
Other Names	Gamma-aminobutyric acid receptor subunit delta; GABA(A) receptor subunit delta
Target/Specificity	KLH-conjugated synthetic peptide encompassing a sequence within the center region of human GABRD. The exact sequence is proprietary.
Dilution	WB~~WB (1/500 - 1/1000), IHC (1/100 - 1/200) IHC~~WB (1/500 - 1/1000), IHC (1/100 - 1/200)
Format	Liquid in 0.42% Potassium phosphate, 0.87% Sodium chloride, pH 7.3, 30% glycerol, and 0.09% (W/V) sodium azide.
Storage	Store at -20 °C.Stable for 12 months from date of receipt

## Protein Information

Name	GABRD ( <a href="#">HGNC:4084</a> )
Function	<p>Delta subunit of the heteropentameric ligand-gated chloride channel gated by gamma-aminobutyric acid (GABA), a major inhibitory neurotransmitter in the brain (PubMed:<a href="#">35355020</a>). GABA-gated chloride channels, also named GABA(A) receptors (GABAAR), consist of five subunits arranged around a central pore and contain GABA active binding site(s) located at the alpha and beta subunit interface(s) (PubMed:<a href="#">35355020</a>). When activated by GABA, GABAARs selectively allow the flow of chloride anions across the cell membrane down their electrochemical gradient (PubMed:<a href="#">35355020</a>). GABAARs containing delta/GABRD subunits are predominantly located in extrasynaptic or perisynaptic positions on hippocampus and cerebellar granule cells, and contribute to the tonic GABAergic inhibition (By similarity). GABAAR containing alpha-4-beta-3-delta subunits can simultaneously bind</p>

GABA and histamine where histamine binds at the interface of two neighboring beta subunits, which may be involved in the regulation of sleep and wakefulness (PubMed:[35355020](#)).

#### Cellular Location

Cell membrane {ECO:0000250 | UniProtKB:P18506}; Multi-pass membrane protein

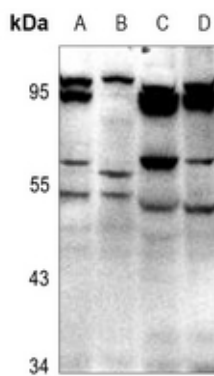
## Background

---

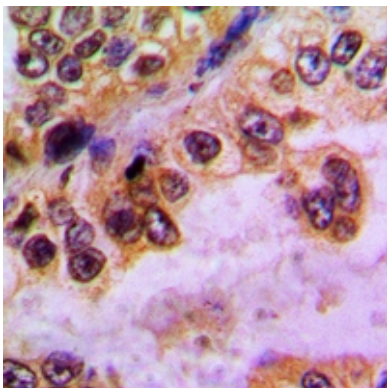
KLH-conjugated synthetic peptide encompassing a sequence within the center region of human GABRD. The exact sequence is proprietary.

## Images

---



Western blot analysis of GABRD expression in SGC7901 (A), HepG2 (B), BV2 (C), PC12 (D) whole cell lysates.



Immunohistochemical analysis of GABRD staining in human lung cancer formalin fixed paraffin embedded tissue section. The section was pre-treated using heat mediated antigen retrieval with sodium citrate buffer (pH 6.0). The section was then incubated with the antibody at room temperature and detected using an HRP conjugated compact polymer system. DAB was used as the chromogen. The section was then counterstained with haematoxylin and mounted with DPX.

Please note: All products are 'FOR RESEARCH USE ONLY. NOT FOR USE IN DIAGNOSTIC OR THERAPEUTIC PROCEDURES'.