

Anti-IL-6 Antibody

Rabbit polyclonal antibody to IL-6

Catalog # AP60675

Product Information

Application	WB, IHC
Primary Accession	P05231
Other Accession	P08505
Reactivity	Human, Mouse, Monkey
Host	Rabbit
Clonality	Polyclonal
Calculated MW	23718

Additional Information

Gene ID	3569
Other Names	IFNB2; Interleukin-6; IL-6; B-cell stimulatory factor 2; BSF-2; CTL differentiation factor; CDF; Hybridoma growth factor; Interferon beta-2; IFN-beta-2
Target/Specificity	KLH-conjugated synthetic peptide encompassing a sequence within the center region of human IL-6. The exact sequence is proprietary.
Dilution	WB~~WB (1/500 - 1/1000), IHC (1/50 - 1/200) IHC~~WB (1/500 - 1/1000), IHC (1/50 - 1/200)
Format	Liquid in 0.42% Potassium phosphate, 0.87% Sodium chloride, pH 7.3, 30% glycerol, and 0.09% (W/V) sodium azide.
Storage	Store at -20 °C.Stable for 12 months from date of receipt

Protein Information

Name	IL6 (HGNC:6018)
Synonyms	IFNB2
Function	Cytokine with a wide variety of biological functions in immunity, tissue regeneration, and metabolism. Binds to IL6R, then the complex associates to the signaling subunit IL6ST/gp130 to trigger the intracellular IL6-signaling pathway (Probable). The interaction with the membrane-bound IL6R and IL6ST stimulates 'classic signaling', whereas the binding of IL6 and soluble IL6R to IL6ST stimulates 'trans- signaling'. Alternatively, 'cluster signaling' occurs when membrane- bound IL6:IL6R complexes on transmitter cells activate IL6ST receptors on neighboring receiver cells (Probable).

Cellular Location

Secreted.

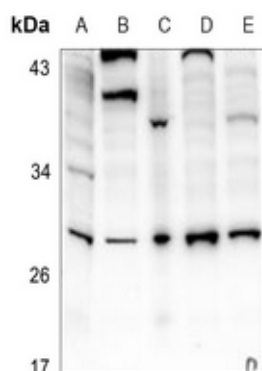
Tissue Location

Produced by skeletal muscle.

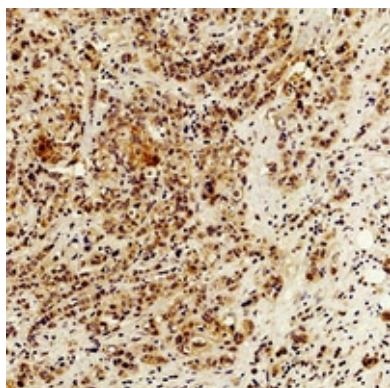
Background

KLH-conjugated synthetic peptide encompassing a sequence within the center region of human IL-6. The exact sequence is proprietary.

Images



Western blot analysis of IL-6 expression in HeLa (A), U87MG (B), HuT78 (C), A549 (D), MCF7 (E) whole cell lysates.



Immunohistochemical analysis of IL-6 staining in human breast cancer formalin fixed paraffin embedded tissue section. The section was pre-treated using heat mediated antigen retrieval with sodium citrate buffer (pH 6.0). The section was then incubated with the antibody at room temperature and detected using an HRP conjugated compact polymer system. DAB was used as the chromogen. The section was then counterstained with haematoxylin and mounted with DPX.

Please note: All products are 'FOR RESEARCH USE ONLY. NOT FOR USE IN DIAGNOSTIC OR THERAPEUTIC PROCEDURES'.