

# Anti-IL-26 Antibody

Rabbit polyclonal antibody to IL-26  
Catalog # AP60674

## Product Information

---

<b>Application</b>	WB
<b>Primary Accession</b>	<a href="#">Q9NPH9</a>
<b>Reactivity</b>	Human, Mouse, Rat
<b>Host</b>	Rabbit
<b>Clonality</b>	Polyclonal
<b>Calculated MW</b>	19843

## Additional Information

---

<b>Gene ID</b>	55801
<b>Other Names</b>	AK155; Interleukin-26; IL-26; Protein AK155
<b>Target/Specificity</b>	KLH-conjugated synthetic peptide encompassing a sequence within the center region of human IL-26. The exact sequence is proprietary.
<b>Dilution</b>	WB--WB (1/500 - 1/1000)
<b>Format</b>	Liquid in 0.42% Potassium phosphate, 0.87% Sodium chloride, pH 7.3, 30% glycerol, and 0.09% (W/V) sodium azide.
<b>Storage</b>	Store at -20 °C. Stable for 12 months from date of receipt

## Protein Information

---

<b>Name</b>	IL26
<b>Synonyms</b>	AK155
<b>Function</b>	May play a role in local mechanisms of mucosal immunity and seems to have a pro-inflammatory function. May play a role in inflammatory bowel disease. Activates STAT1 and STAT3, MAPK1/3 (ERK1/2), JUN and AKT. Induces expression of SOCS3, TNF and IL-8, secretion of IL-8 and IL-10 and surface expression of ICAM1. Decreases proliferation of intestinal epithelial cells. Is inhibited by heparin.
<b>Cellular Location</b>	Secreted.
<b>Tissue Location</b>	Expressed in HVS transformed T-cells but not other T-cell lines or primary stimulated T-cells. Expressed in colonic T- cells including Th17 inflammatory T-cells; the expression is significantly increased in serum of patients with Crohn's disease (at protein level).

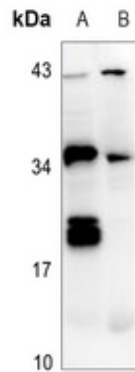
## Background

---

KLH-conjugated synthetic peptide encompassing a sequence within the center region of human IL-26. The exact sequence is proprietary.

## Images

---



Western blot analysis of IL-26 expression in mouse spleen (A), rat spleen (B) whole cell lysates.

Please note: All products are 'FOR RESEARCH USE ONLY. NOT FOR USE IN DIAGNOSTIC OR THERAPEUTIC PROCEDURES'.