

Anti-CD1d Antibody

Rabbit polyclonal antibody to CD1d

Catalog # AP60662

Product Information

Application	WB
Primary Accession	P15813
Reactivity	Human
Host	Rabbit
Clonality	Polyclonal
Calculated MW	37717

Additional Information

Gene ID	912
Other Names	Antigen-presenting glycoprotein CD1d; R3G1; CD1d
Target/Specificity	KLH-conjugated synthetic peptide encompassing a sequence within the center region of human CD1d. The exact sequence is proprietary.
Dilution	WB~~WB (1/500 - 1/1000)
Format	Liquid in 0.42% Potassium phosphate, 0.87% Sodium chloride, pH 7.3, 30% glycerol, and 0.09% (W/V) sodium azide.
Storage	Store at -20 °C.Stable for 12 months from date of receipt

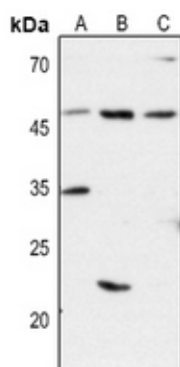
Protein Information

Name	CD1D
Function	Antigen-presenting protein that binds self and non-self glycolipids and presents them to T-cell receptors on natural killer T- cells.
Cellular Location	Cell membrane; Single-pass type I membrane protein. Basolateral cell membrane; Single-pass type I membrane protein. Endosome membrane; Single-pass type I membrane protein. Lysosome membrane; Single-pass type I membrane protein. Endoplasmic reticulum membrane; Single-pass type I membrane protein. Note=Subject to intracellular trafficking between the cell membrane, endosomes and lysosomes.
Tissue Location	Expressed on cortical thymocytes, on certain T-cell leukemias, and in various other tissues

Background

KLH-conjugated synthetic peptide encompassing a sequence within the center region of human CD1d. The exact sequence is proprietary.

Images



Western blot analysis of CD1d expression in HEK293T (A), Hela (B), H446 (C) whole cell lysates.

Please note: All products are 'FOR RESEARCH USE ONLY. NOT FOR USE IN DIAGNOSTIC OR THERAPEUTIC PROCEDURES'.