

Anti-ATP1A2 Antibody

Rabbit polyclonal antibody to ATP1A2

Catalog # AP60659

Product Information

Application	WB
Primary Accession	P50993
Other Accession	Q6PIE5
Reactivity	Human, Mouse, Rat, Monkey, Pig, Bovine
Host	Rabbit
Clonality	Polyclonal
Calculated MW	112265

Additional Information

Gene ID	477
Other Names	KIAA0778; Sodium/potassium-transporting ATPase subunit alpha-2; Na(+)/K(+) ATPase alpha-2 subunit; Sodium pump subunit alpha-2
Target/Specificity	KLH-conjugated synthetic peptide encompassing a sequence within the C-term region of human ATP1A2. The exact sequence is proprietary.
Dilution	WB~~WB (1/500 - 1/1000)
Format	Liquid in 0.42% Potassium phosphate, 0.87% Sodium chloride, pH 7.3, 30% glycerol, and 0.09% (W/V) sodium azide.
Storage	Store at -20 °C.Stable for 12 months from date of receipt

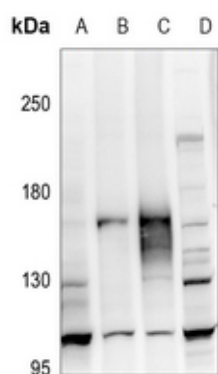
Protein Information

Name	ATP1A2
Synonyms	KIAA0778
Function	This is the catalytic component of the active enzyme, which catalyzes the hydrolysis of ATP coupled with the exchange of sodium and potassium ions across the plasma membrane. This action creates the electrochemical gradient of sodium and potassium, providing the energy for active transport of various nutrients.
Cellular Location	Membrane; Multi-pass membrane protein. Cell membrane; Multi-pass membrane protein

Background

KLH-conjugated synthetic peptide encompassing a sequence within the C-term region of human ATP1A2. The exact sequence is proprietary.

Images



Western blot analysis of ATP1A2 expression in HeLa (A), H1792 (B), Panc1 (C), AML12 (D) whole cell lysates.

Please note: All products are 'FOR RESEARCH USE ONLY. NOT FOR USE IN DIAGNOSTIC OR THERAPEUTIC PROCEDURES'.