

Anti-CD296 Antibody

Rabbit polyclonal antibody to CD296

Catalog # AP60658

Product Information

Application	WB
Primary Accession	P52961
Other Accession	Q60935
Reactivity	Human, Mouse, Rat
Host	Rabbit
Clonality	Polyclonal
Calculated MW	36335

Additional Information

Gene ID	417
Other Names	GPI-linked NAD(P)(+)-arginine ADP-ribosyltransferase 1; ADP-ribosyltransferase C2 and C3 toxin-like 1; ARTC1; Mono(ADP-ribosyl)transferase 1; CD296
Target/Specificity	KLH-conjugated synthetic peptide encompassing a sequence within the center region of human CD296. The exact sequence is proprietary.
Dilution	WB~~WB (1/500 - 1/1000)
Format	Liquid in 0.42% Potassium phosphate, 0.87% Sodium chloride, pH 7.3, 30% glycerol, and 0.09% (W/V) sodium azide.
Storage	Store at -20 °C.Stable for 12 months from date of receipt

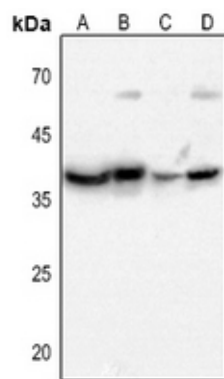
Protein Information

Name	ART1
Function	Has ADP-ribosyltransferase activity toward GLP1R.
Cellular Location	Sarcoplasmic reticulum membrane; Lipid-anchor, GPI-anchor

Background

KLH-conjugated synthetic peptide encompassing a sequence within the center region of human CD296. The exact sequence is proprietary.

Images



Western blot analysis of CD296 expression in mouse muscle (A), mouse brain (B), rat muscle (C), rat brain (D) whole cell lysates.

Please note: All products are 'FOR RESEARCH USE ONLY. NOT FOR USE IN DIAGNOSTIC OR THERAPEUTIC PROCEDURES'.