

Anti-LKB1 (pT189) Antibody

Rabbit polyclonal antibody to LKB1 (pT189)
Catalog # AP60638

Product Information

Application	WB
Primary Accession	Q15831
Other Accession	Q9WTK7
Reactivity	Human, Mouse, Rat, Chicken
Host	Rabbit
Clonality	Polyclonal

Additional Information

Other Names	LKB1; PJS; Serine/threonine-protein kinase STK11; Liver kinase B1; LKB1; hLKB1; Renal carcinoma antigen NY-REN-19
Target/Specificity	KLH-conjugated synthetic peptide encompassing a sequence within the center region of human LKB1. The exact sequence is proprietary.
Dilution	WB~~WB (1/500 - 1/1000)
Format	Liquid in 0.42% Potassium phosphate, 0.87% Sodium chloride, pH 7.3, 30% glycerol, and 0.09% (W/V) sodium azide.
Storage	Store at -20 °C. Stable for 12 months from date of receipt

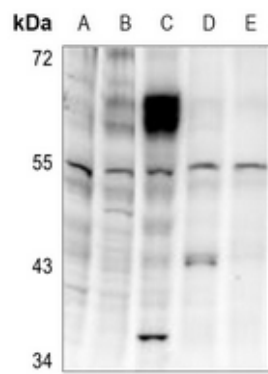
Protein Information

Background

KLH-conjugated synthetic peptide encompassing a sequence within the center region of human LKB1. The exact sequence is proprietary.

Images

Western blot analysis of LKB1 (pT189) expression in AML12 (A), PC12 (B), A375 (C), Panc1 (D), SHSY5Y (E) whole cell lysates.



Please note: All products are 'FOR RESEARCH USE ONLY. NOT FOR USE IN DIAGNOSTIC OR THERAPEUTIC PROCEDURES'.