

Anti-MYT1 Antibody

Rabbit polyclonal antibody to MYT1
Catalog # AP60608

Product Information

Application	WB, IHC
Primary Accession	Q99640
Other Accession	Q9ESG9
Reactivity	Human, Mouse, Rat
Host	Rabbit
Clonality	Polyclonal
Calculated MW	54521

Additional Information

Gene ID	9088
Other Names	MYT1; Membrane-associated tyrosine- and threonine-specific cdc2-inhibitory kinase; Myt1 kinase
Target/Specificity	KLH-conjugated synthetic peptide encompassing a sequence within the center region of human MYT1. The exact sequence is proprietary.
Dilution	WB~~WB (1/500 - 1/1000), IHC (1/100 - 1/200) IHC~~WB (1/500 - 1/1000), IHC (1/100 - 1/200)
Format	Liquid in 0.42% Potassium phosphate, 0.87% Sodium chloride, pH 7.3, 30% glycerol, and 0.09% (W/V) sodium azide.
Storage	Store at -20 °C.Stable for 12 months from date of receipt

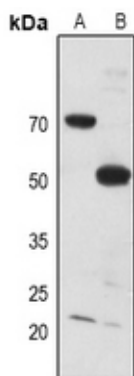
Protein Information

Name	PKMYT1
Synonyms	MYT1
Function	<p>Acts as a negative regulator of entry into mitosis (G2 to M transition) by phosphorylation of the CDK1 kinase specifically when CDK1 is complexed to cyclins (PubMed:10373560, PubMed:10504341, PubMed:9001210, PubMed:9268380). Mediates phosphorylation of CDK1 predominantly on 'Thr-14'. Also involved in Golgi fragmentation (PubMed:9001210, PubMed:9268380). May be involved in phosphorylation of CDK1 on 'Tyr-15' to a lesser degree, however tyrosine kinase activity is unclear and may be indirect (PubMed:9001210, PubMed:9268380).</p> <p>Endoplasmic reticulum membrane; Peripheral membrane protein. Golgi</p>

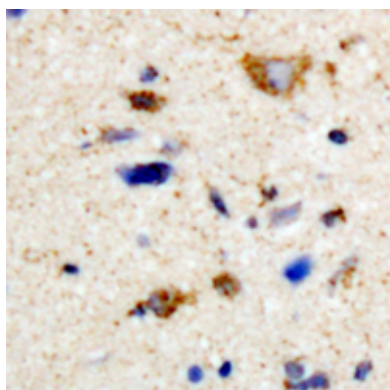
Background

KLH-conjugated synthetic peptide encompassing a sequence within the center region of human MYT1. The exact sequence is proprietary.

Images



Western blot analysis of MYT1 expression in rat liver (A), rat muscle (B) whole cell lysates.



Immunohistochemical analysis of MYT1 staining in human brain formalin fixed paraffin embedded tissue section. The section was pre-treated using heat mediated antigen retrieval with sodium citrate buffer (pH 6.0). The section was then incubated with the antibody at room temperature and detected using an HRP conjugated compact polymer system. DAB was used as the chromogen. The section was then counterstained with haematoxylin and mounted with DPX.

Please note: All products are 'FOR RESEARCH USE ONLY. NOT FOR USE IN DIAGNOSTIC OR THERAPEUTIC PROCEDURES'.