

Anti-GPR97 Antibody

Rabbit polyclonal antibody to GPR97
Catalog # AP60568

Product Information

Application	WB, IF/IC
Primary Accession	Q86Y34
Other Accession	Q8R0T6
Reactivity	Human, Mouse
Host	Rabbit
Clonality	Polyclonal

Additional Information

Other Names	PGR26; Probable G-protein coupled receptor 97; G-protein coupled receptor PGR26
Target/Specificity	KLH-conjugated synthetic peptide encompassing a sequence within the center region of human GPR97. The exact sequence is proprietary.
Dilution	WB~~WB (1/500 - 1/1000), IF/IC (1/100 - 1/500) IF/IC~~N/A
Format	Liquid in 0.42% Potassium phosphate, 0.87% Sodium chloride, pH 7.3, 30% glycerol, and 0.09% (W/V) sodium azide.
Storage	Store at -20 °C. Stable for 12 months from date of receipt

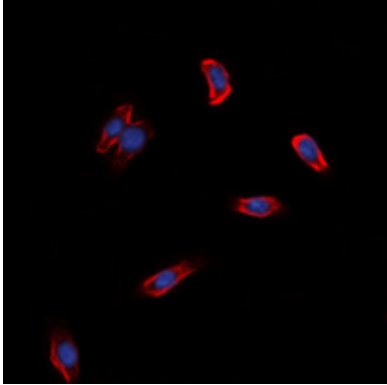
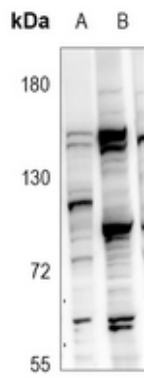
Protein Information

Background

KLH-conjugated synthetic peptide encompassing a sequence within the center region of human GPR97. The exact sequence is proprietary.

Images

Western blot analysis of GPR97 expression in HepG2 (A), SP20 (B) whole cell lysates.



Immunofluorescent analysis of GPR97 staining in HeLa cells. Formalin-fixed cells were permeabilized with 0.1% Triton X-100 in TBS for 5-10 minutes and blocked with 3% BSA-PBS for 30 minutes at room temperature. Cells were probed with the primary antibody in 3% BSA-PBS and incubated overnight at 4 °C in a humidified chamber. Cells were washed with PBST and incubated with a DyLight 594-conjugated secondary antibody (red) in PBS at room temperature in the dark. DAPI was used to stain the cell nuclei (blue).

Please note: All products are 'FOR RESEARCH USE ONLY. NOT FOR USE IN DIAGNOSTIC OR THERAPEUTIC PROCEDURES'.