

Anti-CREB (pS142) Antibody

Rabbit polyclonal antibody to CREB (pS142)
Catalog # AP60558

Product Information

Application	WB, IF/IC, IHC
Primary Accession	P16220
Other Accession	Q01147
Reactivity	Human, Mouse, Rat, Zebrafish, Pig, Chicken, Bovine, SARS
Host	Rabbit
Clonality	Polyclonal
Calculated MW	35136

Additional Information

Gene ID	1385
Other Names	Cyclic AMP-responsive element-binding protein 1; CREB-1; cAMP-responsive element-binding protein 1
Target/Specificity	Recognizes endogenous levels of CREB (pS142) protein.
Dilution	WB~~WB (1/500 - 1/1000), IHC (1/100 - 1/200), IF/IC (1/100 - 1/500) IF/IC~~N/A IHC~~WB (1/500 - 1/1000), IHC (1/100 - 1/200), IF/IC (1/100 - 1/500)
Format	Liquid in 0.42% Potassium phosphate, 0.87% Sodium chloride, pH 7.3, 30% glycerol, and 0.09% (W/V) sodium azide.
Storage	Store at -20 °C. Stable for 12 months from date of receipt

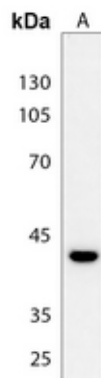
Protein Information

Name	CREB1
Function	<p>Phosphorylation-dependent transcription factor that stimulates transcription upon binding to the DNA cAMP response element (CRE), a sequence present in many viral and cellular promoters (By similarity). Transcription activation is enhanced by the TORC coactivators which act independently of Ser-119 phosphorylation (PubMed:14536081). Involved in different cellular processes including the synchronization of circadian rhythmicity and the differentiation of adipose cells (By similarity). Regulates the expression of apoptotic and inflammatory response factors in cardiomyocytes in response to ERFE-mediated activation of AKT signaling (By similarity).</p> <p>Nucleus {ECO:0000255 PROSITE-ProRule:PRU00312,</p>

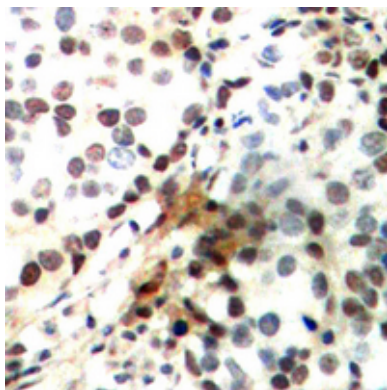
Background

KLH-conjugated synthetic peptide encompassing a sequence within the center region of human CREB. The exact sequence is proprietary.

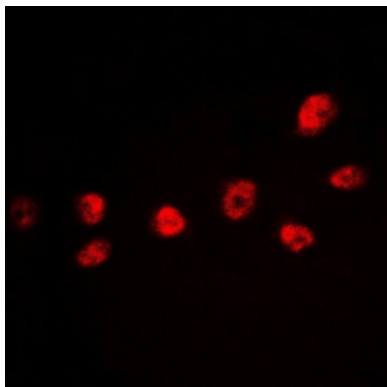
Images



Western blot analysis of CREB (pS142) expression in mouse heart (A) whole cell lysates.



Immunohistochemical analysis of CREB (pS142) staining in human breast cancer formalin fixed paraffin embedded tissue section. The section was pre-treated using heat mediated antigen retrieval with sodium citrate buffer (pH 6.0). The section was then incubated with the antibody at room temperature and detected using an HRP conjugated compact polymer system. DAB was used as the chromogen. The section was then counterstained with haematoxylin and mounted with DPX.



Immunofluorescent analysis of CREB (pS142) staining in HeLa cells. Formalin-fixed cells were permeabilized with 0.1% Triton X-100 in TBS for 5-10 minutes and blocked with 3% BSA-PBS for 30 minutes at room temperature. Cells were probed with the primary antibody in 3% BSA-PBS and incubated overnight at 4 °C in a humidified chamber. Cells were washed with PBST and incubated with a DyLight 594-conjugated secondary antibody (red) in PBS at room temperature in the dark.

Please note: All products are 'FOR RESEARCH USE ONLY. NOT FOR USE IN DIAGNOSTIC OR THERAPEUTIC PROCEDURES'.