

# Anti-ATP5H Antibody

Rabbit polyclonal antibody to ATP5H

Catalog # AP60540

## Product Information

Application	WB, IHC
Primary Accession	<a href="#">O75947</a>
Reactivity	Human, Rat
Host	Rabbit
Clonality	Polyclonal
Calculated MW	18491

## Additional Information

Gene ID	10476
Other Names	ATP synthase subunit d mitochondrial; ATPase subunit d
Target/Specificity	Recognizes endogenous levels of ATP5H protein.
Dilution	WB~~WB (1/500 - 1/1000), IHC (1/100 - 1/200) IHC~~WB (1/500 - 1/1000), IHC (1/100 - 1/200)
Format	Liquid in 0.42% Potassium phosphate, 0.87% Sodium chloride, pH 7.3, 30% glycerol, and 0.09% (W/V) sodium azide.
Storage	Store at -20 °C.Stable for 12 months from date of receipt

## Protein Information

Name	ATP5PD ( <a href="#">HGNC:845</a> )
Synonyms	ATP5H
Function	<p>Subunit d, of the mitochondrial membrane ATP synthase complex (F(1)F(0) ATP synthase or Complex V) that produces ATP from ADP in the presence of a proton gradient across the membrane which is generated by electron transport complexes of the respiratory chain (PubMed:<a href="#">37244256</a>). ATP synthase complex consist of a soluble F(1) head domain - the catalytic core - and a membrane F(1) domain - the membrane proton channel (PubMed:<a href="#">37244256</a>). These two domains are linked by a central stalk rotating inside the F(1) region and a stationary peripheral stalk (PubMed:<a href="#">37244256</a>). During catalysis, ATP synthesis in the catalytic domain of F(1) is coupled via a rotary mechanism of the central stalk subunits to proton translocation (Probable). In vivo, can only synthesize ATP although its ATP hydrolase activity can be activated artificially in vitro (By similarity). Part of the complex F(0) domain (PubMed:<a href="#">37244256</a>). Part of the complex F(0) domain and the</p>

peripheric stalk, which acts as a stator to hold the catalytic alpha(3)beta(3) subcomplex and subunit a/ATP6 static relative to the rotary elements (By similarity).

## Cellular Location

Mitochondrion. Mitochondrion inner membrane.

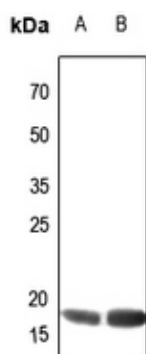
## Background

---

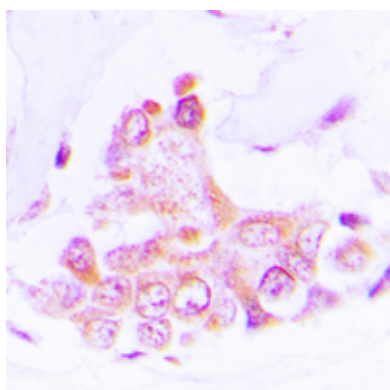
KLH-conjugated synthetic peptide encompassing a sequence within the C-term region of human ATP5H. The exact sequence is proprietary.

## Images

---



Western blot analysis of ATP5H expression in Hela (A), HGC27 (B) whole cell lysates.



Immunohistochemical analysis of ATP5H staining in human lung cancer formalin fixed paraffin embedded tissue section. The section was pre-treated using heat mediated antigen retrieval with sodium citrate buffer (pH 6.0). The section was then incubated with the antibody at room temperature and detected using an HRP conjugated compact polymer system. DAB was used as the chromogen. The section was then counterstained with haematoxylin and mounted with DPX.

Please note: All products are 'FOR RESEARCH USE ONLY. NOT FOR USE IN DIAGNOSTIC OR THERAPEUTIC PROCEDURES'.