

# Anti-A-RAF Antibody

Rabbit polyclonal antibody to A-RAF

Catalog # AP60536

## Product Information

---

<b>Application</b>	WB
<b>Primary Accession</b>	<a href="#">P10398</a>
<b>Reactivity</b>	Human
<b>Host</b>	Rabbit
<b>Clonality</b>	Polyclonal
<b>Calculated MW</b>	67585

## Additional Information

---

<b>Gene ID</b>	369
<b>Other Names</b>	ARAF1; PKS; PKS2; Serine/threonine-protein kinase A-Raf; Proto-oncogene A-Raf; Proto-oncogene A-Raf-1; Proto-oncogene Pks
<b>Target/Specificity</b>	Recognizes endogenous levels of A-RAF protein.
<b>Dilution</b>	WB~~WB (1/500 - 1/1000)
<b>Format</b>	Liquid in 0.42% Potassium phosphate, 0.87% Sodium chloride, pH 7.3, 30% glycerol, and 0.09% (W/V) sodium azide.
<b>Storage</b>	Store at -20 °C.Stable for 12 months from date of receipt

## Protein Information

---

<b>Name</b>	ARAF
<b>Synonyms</b>	ARAF1, PKS, PKS2
<b>Function</b>	Involved in the transduction of mitogenic signals from the cell membrane to the nucleus. May also regulate the TOR signaling cascade. Phosphorylates PFKFB2 (PubMed: <a href="#">36402789</a> ).
<b>Tissue Location</b>	Predominantly in urogenital tissues.

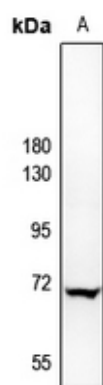
## Background

---

KLH-conjugated synthetic peptide encompassing a sequence within the center region of human A-RAF. The exact sequence is proprietary.

## Images

---



Western blot analysis of A-RAF expression in MCF7 (A) whole cell lysates.

Please note: All products are 'FOR RESEARCH USE ONLY. NOT FOR USE IN DIAGNOSTIC OR THERAPEUTIC PROCEDURES'.