

# Anti-Annexin A1 (pY21) Antibody

Rabbit polyclonal antibody to Annexin A1 (pY21)  
Catalog # AP60534

## Product Information

---

<b>Application</b>	WB
<b>Primary Accession</b>	<a href="#">P04083</a>
<b>Other Accession</b>	<a href="#">P10107</a>
<b>Reactivity</b>	Human, Mouse, Rat
<b>Host</b>	Rabbit
<b>Clonality</b>	Polyclonal
<b>Calculated MW</b>	38714

## Additional Information

---

<b>Gene ID</b>	301
<b>Other Names</b>	ANX1; LPC1; Annexin A1; Annexin I; Annexin-1; Calpactin II; Calpactin-2; Chromobindin-9; Lipocortin I; Phospholipase A2 inhibitory protein; p35
<b>Target/Specificity</b>	KLH-conjugated synthetic peptide encompassing a sequence within the N-term region of human Annexin A1. The exact sequence is proprietary.
<b>Dilution</b>	WB~WB (1/500 - 1/1000)
<b>Format</b>	Liquid in 0.42% Potassium phosphate, 0.87% Sodium chloride, pH 7.3, 30% glycerol, and 0.09% (W/V) sodium azide.
<b>Storage</b>	Store at -20 °C. Stable for 12 months from date of receipt

## Protein Information

---

<b>Name</b>	ANXA1
<b>Synonyms</b>	ANX1, LPC1
<b>Function</b>	Plays important roles in the innate immune response as effector of glucocorticoid-mediated responses and regulator of the inflammatory process. Has anti-inflammatory activity (PubMed: <a href="#">8425544</a> ). Plays a role in glucocorticoid-mediated down-regulation of the early phase of the inflammatory response (By similarity). Contributes to the adaptive immune response by enhancing signaling cascades that are triggered by T-cell activation, regulates differentiation and proliferation of activated T cells (PubMed: <a href="#">17008549</a> ). Promotes the differentiation of T cells into Th1 cells and negatively regulates differentiation into Th2 cells (PubMed: <a href="#">17008549</a> ). Has no effect on unstimulated T cells (PubMed: <a href="#">17008549</a> ). Negatively regulates hormone exocytosis via activation of the formyl peptide receptors and

reorganization of the actin cytoskeleton (PubMed:[19625660](#)). Has high affinity for Ca(2+) and can bind up to eight Ca(2+) ions (By similarity). Displays Ca(2+)-dependent binding to phospholipid membranes (PubMed:[2532504](#), PubMed:[8557678](#)). Plays a role in the formation of phagocytic cups and phagosomes. Plays a role in phagocytosis by mediating the Ca(2+)-dependent interaction between phagosomes and the actin cytoskeleton (By similarity). In the context of antitumor immunity, interacts with FPR1 on dendritic cells allowing for tumor-associated antigens uptake and cross-presentation to T cells to mount an antitumor specific T cell response.

### Cellular Location

Nucleus. Cytoplasm. Cell projection, cilium {ECO:0000250|UniProtKB:P46193}. Cell membrane. Membrane; Peripheral membrane protein. Endosome membrane {ECO:0000250|UniProtKB:P07150}; Peripheral membrane protein {ECO:0000250|UniProtKB:P07150}. Basolateral cell membrane {ECO:0000250|UniProtKB:P51662}. Apical cell membrane {ECO:0000250|UniProtKB:P10107}. Lateral cell membrane {ECO:0000250|UniProtKB:P10107}. Secreted. Secreted, extracellular space. Cell membrane; Peripheral membrane protein; Extracellular side. Secreted, extracellular exosome. Cytoplasmic vesicle, secretory vesicle lumen. Cell projection, phagocytic cup {ECO:0000250|UniProtKB:P10107}. Early endosome {ECO:0000250|UniProtKB:P19619}. Cytoplasmic vesicle membrane {ECO:0000250|UniProtKB:P19619}; Peripheral membrane protein {ECO:0000250|UniProtKB:P19619}. Note=Secreted, at least in part via exosomes and other secretory vesicles. Detected in exosomes and other extracellular vesicles (PubMed:[25664854](#)). Alternatively, the secretion is dependent on protein unfolding and facilitated by the cargo receptor TMED10; it results in the protein translocation from the cytoplasm into ERGIC (endoplasmic reticulum-Golgi intermediate compartment) followed by vesicle entry and secretion (PubMed:[32272059](#)). Detected in gelatinase granules in resting neutrophils (PubMed:[10772777](#)). Secretion is increased in response to wounding and inflammation (PubMed:[25664854](#)). Secretion is increased upon T-cell activation (PubMed:[17008549](#)). Neutrophil adhesion to endothelial cells stimulates secretion via gelatinase granules, but foreign particle phagocytosis has no effect (PubMed:[10772777](#)). Colocalizes with actin fibers at phagocytic cups (By similarity). Displays calcium-dependent binding to phospholipid membranes (PubMed:[2532504](#), PubMed:[8557678](#)) {ECO:0000250|UniProtKB:P10107, ECO:0000269|PubMed:[10772777](#), ECO:0000269|PubMed:[17008549](#), ECO:0000269|PubMed:[2532504](#), ECO:0000269|PubMed:[25664854](#), ECO:0000269|PubMed:[32272059](#), ECO:0000269|PubMed:[8557678](#)}

### Tissue Location

Detected in resting neutrophils (PubMed:[10772777](#)). Detected in peripheral blood T cells (PubMed:[17008549](#)). Detected in extracellular vesicles in blood serum from patients with inflammatory bowel disease, but not in serum from healthy donors (PubMed:[25664854](#)) Detected in placenta (at protein level) (PubMed:[2532504](#)). Detected in liver.

## Background

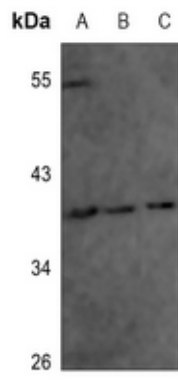
---

KLH-conjugated synthetic peptide encompassing a sequence within the N-term region of human Annexin A1. The exact sequence is proprietary.

## Images

---

Western blot analysis of Annexin A1 (pY21) expression in H1792 (A), mouse lung (B), rat lung (C) whole cell lysates.



Please note: All products are 'FOR RESEARCH USE ONLY. NOT FOR USE IN DIAGNOSTIC OR THERAPEUTIC PROCEDURES'.