

Anti-VASP (pS238) Antibody

Rabbit polyclonal antibody to VASP (pS238)

Catalog # AP60525

Product Information

Application	WB, IHC
Primary Accession	P50552
Other Accession	P70460
Reactivity	Human, Mouse, Rat, Bovine, Drosophila
Host	Rabbit
Clonality	Polyclonal
Calculated MW	39830

Additional Information

Gene ID	7408
Other Names	Vasodilator-stimulated phosphoprotein; VASP
Target/Specificity	Recognizes endogenous levels of VASP (pS238) protein.
Dilution	WB~~WB (1/500 - 1/1000), IHC (1/100 - 1/200) IHC~~WB (1/500 - 1/1000), IHC (1/100 - 1/200)
Format	Liquid in 0.42% Potassium phosphate, 0.87% Sodium chloride, pH 7.3, 30% glycerol, and 0.09% (W/V) sodium azide.
Storage	Store at -20 °C.Stable for 12 months from date of receipt

Protein Information

Name	VASP
Function	Ena/VASP proteins are actin-associated proteins involved in a range of processes dependent on cytoskeleton remodeling and cell polarity such as axon guidance, lamellipodial and filopodial dynamics, platelet activation and cell migration. VASP promotes actin filament elongation. It protects the barbed end of growing actin filaments against capping and increases the rate of actin polymerization in the presence of capping protein. VASP stimulates actin filament elongation by promoting the transfer of profilin-bound actin monomers onto the barbed end of growing actin filaments. Plays a role in actin-based mobility of <i>Listeria monocytogenes</i> in host cells. Regulates actin dynamics in platelets and plays an important role in regulating platelet aggregation.
Cellular Location	Cytoplasm. Cytoplasm, cytoskeleton. Cell junction, focal adhesion. Cell junction, tight junction Cell projection, lamellipodium membrane. Cell

projection, filopodium membrane. Note=Targeted to stress fibers and focal adhesions through interaction with a number of proteins including MRL family members Localizes to the plasma membrane in protruding lamellipodia and filopodial tips. Stimulation by thrombin or PMA, also translocates VASP to focal adhesions. Localized along the sides of actin filaments throughout the peripheral cytoplasm under basal conditions. In pre- apoptotic cells, colocalizes with MEFV in large specks (pyroptosomes)

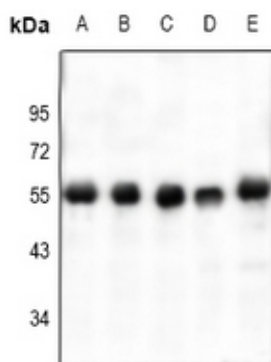
Tissue Location

Highly expressed in platelets.

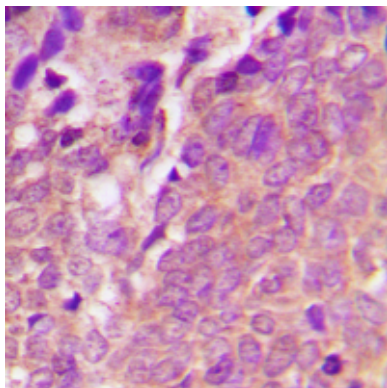
Background

KLH-conjugated synthetic peptide encompassing a sequence within the center region of human VASP (pS238). The exact sequence is proprietary.

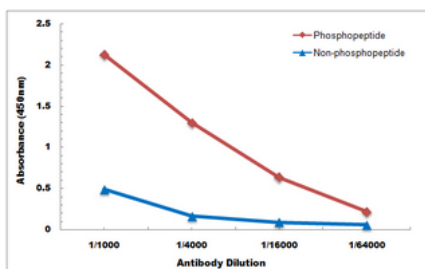
Images



Western blot analysis of VASP (pS238) expression in K562 (A), A375 (B), Hela (C), rat uterus (D), 3T3L1 (E) whole cell lysates.



Immunohistochemical analysis of VASP (pS238) staining in human breast cancer formalin fixed paraffin embedded tissue section. The section was pre-treated using heat mediated antigen retrieval with sodium citrate buffer (pH 6.0). The section was then incubated with the antibody at room temperature and detected using an HRP conjugated compact polymer system. DAB was used as the chromogen. The section was then counterstained with haematoxylin and mounted with DPX.



Direct ELISA antibody dose-response curve using Anti-VASP (pS238) Antibody. Antigen (phosphopeptide and non-phosphopeptide) concentration is 5 ug/ml. Goat Anti-Rabbit IgG (H&L) - HRP was used as the secondary antibody, and signal was developed by TMB substrate.

Please note: All products are 'FOR RESEARCH USE ONLY. NOT FOR USE IN DIAGNOSTIC OR THERAPEUTIC PROCEDURES'.