

Anti-PPT Antibody

Rabbit polyclonal antibody to PPT
Catalog # AP60500

Product Information

Application	WB, IHC
Primary Accession	P50897
Reactivity	Human, Mouse, Rat, Monkey, Bovine
Host	Rabbit
Clonality	Polyclonal
Calculated MW	34193

Additional Information

Gene ID	5538
Other Names	PPT; Palmitoyl-protein thioesterase 1; PPT-1; Palmitoyl-protein hydrolase 1
Target/Specificity	KLH-conjugated synthetic peptide encompassing a sequence within the N-term region of human PPT. The exact sequence is proprietary.
Dilution	WB~~WB (1/500 - 1/1000), IHC (1/100 - 1/200) IHC~~WB (1/500 - 1/1000), IHC (1/100 - 1/200)
Format	Liquid in 0.42% Potassium phosphate, 0.87% Sodium chloride, pH 7.3, 30% glycerol, and 0.09% (W/V) sodium azide.
Storage	Store at -20 °C.Stable for 12 months from date of receipt

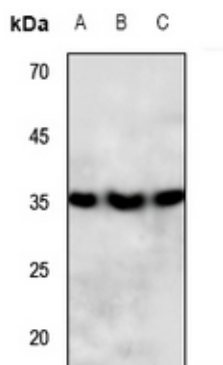
Protein Information

Name	PPT1
Synonyms	CLN1 {ECO:0000303 PubMed:19941651}, PPT
Function	Has thioesterase activity against fatty acid thioesters with 14 -18 carbons, including palmitoyl-CoA, S-palmitoyl-N- acetylcysteamine, and palmitoylated proteins (PubMed: 12855696 , PubMed: 26731412 , PubMed: 8816748). In contrast to PPT2, PPT1 can hydrolyze palmitoylated proteins and palmitoylcysteine (PubMed: 12855696).
Cellular Location	Lysosome. Secreted Golgi apparatus. Endoplasmic reticulum

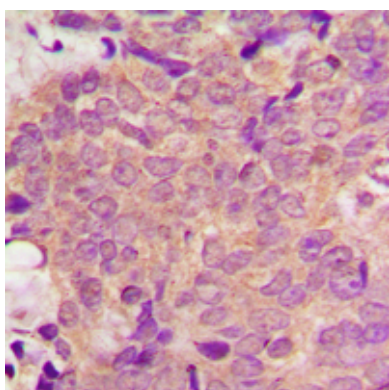
Background

KLH-conjugated synthetic peptide encompassing a sequence within the N-term region of human PPT. The exact sequence is proprietary.

Images



Western blot analysis of PPT expression in mouse spleen (A), rat liver (B), rat spleen (C) whole cell lysates.



Immunohistochemical analysis of PPT staining in human breast cancer formalin fixed paraffin embedded tissue section. The section was pre-treated using heat mediated antigen retrieval with sodium citrate buffer (pH 6.0). The section was then incubated with the antibody at room temperature and detected using an HRP conjugated compact polymer system. DAB was used as the chromogen. The section was then counterstained with haematoxylin and mounted with DPX.

Please note: All products are 'FOR RESEARCH USE ONLY. NOT FOR USE IN DIAGNOSTIC OR THERAPEUTIC PROCEDURES'.