

# Anti-PFKM Antibody

Rabbit polyclonal antibody to PFKM

Catalog # AP60499

## Product Information

---

<b>Application</b>	WB, IHC
<b>Primary Accession</b>	<a href="#">P08237</a>
<b>Reactivity</b>	Human, Mouse, Rat
<b>Host</b>	Rabbit
<b>Clonality</b>	Polyclonal
<b>Calculated MW</b>	85183

## Additional Information

---

<b>Gene ID</b>	5213
<b>Other Names</b>	PFKX; 6-phosphofructokinase, muscle type; Phosphofructo-1-kinase isozyme A; PFK-A; Phosphofructokinase-M; Phosphofructokinase 1; Phosphohexokinase
<b>Target/Specificity</b>	KLH-conjugated synthetic peptide encompassing a sequence within the center region of human PFKM. The exact sequence is proprietary.
<b>Dilution</b>	WB~~WB (1/500 - 1/1000), IHC (1/100 - 1/200) IHC~~WB (1/500 - 1/1000), IHC (1/100 - 1/200)
<b>Format</b>	Liquid in 0.42% Potassium phosphate, 0.87% Sodium chloride, pH 7.3, 30% glycerol, and 0.09% (W/V) sodium azide.
<b>Storage</b>	Store at -20 °C.Stable for 12 months from date of receipt

## Protein Information

---

<b>Name</b>	PFKM
<b>Synonyms</b>	PFKX
<b>Function</b>	Catalyzes the phosphorylation of D-fructose 6-phosphate to fructose 1,6-bisphosphate by ATP, the first committing step of glycolysis.
<b>Cellular Location</b>	Cytoplasm {ECO:0000255 HAMAP-Rule:MF_03184}.

## Background

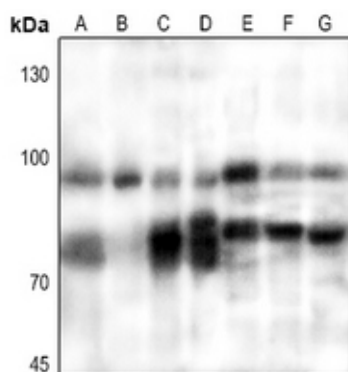
---

KLH-conjugated synthetic peptide encompassing a sequence within the center region of human PFKM. The

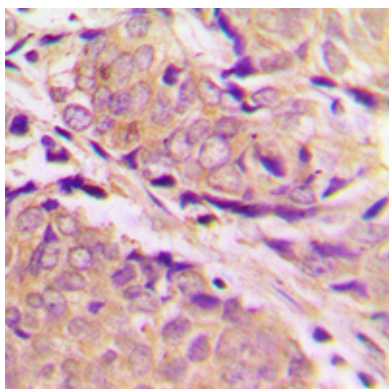
exact sequence is proprietary.

## Images

---



Western blot analysis of PFKM expression in HEK293T (A), HeLa (B), HepG2 (C), H460 (D), mouse lung (E), mouse heart (F), rat heart (G) whole cell lysates.



Immunohistochemical analysis of PFKM staining in human breast cancer formalin fixed paraffin embedded tissue section. The section was pre-treated using heat mediated antigen retrieval with sodium citrate buffer (pH 6.0). The section was then incubated with the antibody at room temperature and detected using an HRP conjugated compact polymer system. DAB was used as the chromogen. The section was then counterstained with haematoxylin and mounted with DPX.

Please note: All products are 'FOR RESEARCH USE ONLY. NOT FOR USE IN DIAGNOSTIC OR THERAPEUTIC PROCEDURES'.