

Anti-IKB epsilon Antibody

Rabbit polyclonal antibody to IKB epsilon
Catalog # AP60492

Product Information

Application	WB, IF/IC, IHC
Primary Accession	O00221
Other Accession	O54910
Reactivity	Human, Mouse, Rat, Bovine
Host	Rabbit
Clonality	Polyclonal

Additional Information

Other Names	IKBE; NF-kappa-B inhibitor epsilon; NF-kappa-BIE; I-kappa-B-epsilon; IkB-E; IkB-epsilon; IkappaBepsilon
Target/Specificity	KLH-conjugated synthetic peptide encompassing a sequence within the center region of human IKB epsilon. The exact sequence is proprietary.
Dilution	WB~~WB (1/500 - 1/1000), IHC (1/100 - 1/200), IF/IC (1/100 - 1/500) IF/IC~~N/A IHC~~WB (1/500 - 1/1000), IHC (1/100 - 1/200), IF/IC (1/100 - 1/500)
Format	Liquid in 0.42% Potassium phosphate, 0.87% Sodium chloride, pH 7.3, 30% glycerol, and 0.09% (W/V) sodium azide.
Storage	Store at -20 °C. Stable for 12 months from date of receipt

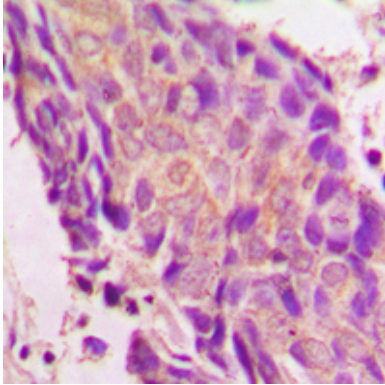
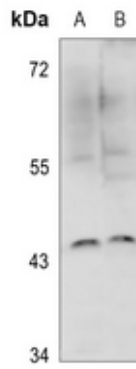
Protein Information

Background

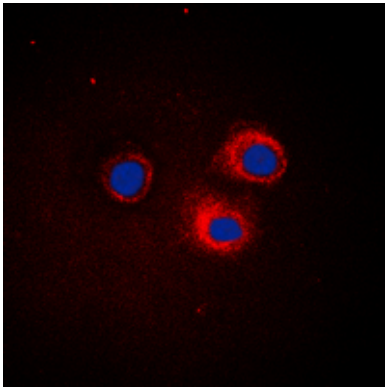
KLH-conjugated synthetic peptide encompassing a sequence within the center region of human IKB epsilon. The exact sequence is proprietary.

Images

Western blot analysis of IKB epsilon expression in A549 (A), H1792 (B) whole cell lysates.



Immunohistochemical analysis of IKB epsilon staining in human prostate cancer formalin fixed paraffin embedded tissue section. The section was pre-treated using heat mediated antigen retrieval with sodium citrate buffer (pH 6.0). The section was then incubated with the antibody at room temperature and detected using an HRP conjugated compact polymer system. DAB was used as the chromogen. The section was then counterstained with haematoxylin and mounted with DPX.



Immunofluorescent analysis of IKB epsilon staining in HepG2 cells. Formalin-fixed cells were permeabilized with 0.1% Triton X-100 in TBS for 5-10 minutes and blocked with 3% BSA-PBS for 30 minutes at room temperature. Cells were probed with the primary antibody in 3% BSA-PBS and incubated overnight at 4 °C in a humidified chamber. Cells were washed with PBST and incubated with a DyLight 594-conjugated secondary antibody (red) in PBS at room temperature in the dark. DAPI was used to stain the cell nuclei (blue).

Please note: All products are 'FOR RESEARCH USE ONLY. NOT FOR USE IN DIAGNOSTIC OR THERAPEUTIC PROCEDURES'.