

# Anti-Merlin Antibody

Rabbit polyclonal antibody to Merlin  
Catalog # AP60490

## Product Information

---

<b>Application</b>	WB, IF/IC, IHC
<b>Primary Accession</b>	<a href="#">P35240</a>
<b>Other Accession</b>	<a href="#">P46662</a>
<b>Reactivity</b>	Human, Mouse, Rat, Chicken
<b>Host</b>	Rabbit
<b>Clonality</b>	Polyclonal

## Additional Information

---

<b>Other Names</b>	SCH; Merlin; Moesin-ezrin-radixin-like protein; Neurofibromin-2; Schwannomerlin; Schwannomin
<b>Target/Specificity</b>	KLH-conjugated synthetic peptide encompassing a sequence within the C-term region of human Merlin. The exact sequence is proprietary.
<b>Dilution</b>	WB~~WB (1/500 - 1/1000), IHC (1/100 - 1/200), IF/IC (1/100 - 1/500) IF/IC~~N/A IHC~~WB (1/500 - 1/1000), IHC (1/100 - 1/200), IF/IC (1/100 - 1/500)
<b>Format</b>	Liquid in 0.42% Potassium phosphate, 0.87% Sodium chloride, pH 7.3, 30% glycerol, and 0.09% (W/V) sodium azide.
<b>Storage</b>	Store at -20 °C. Stable for 12 months from date of receipt

## Protein Information

---

### Background

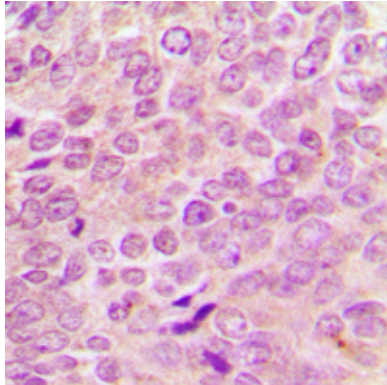
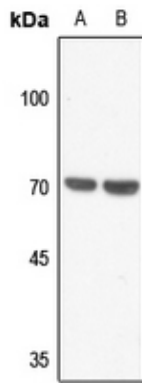
---

KLH-conjugated synthetic peptide encompassing a sequence within the C-term region of human Merlin. The exact sequence is proprietary.

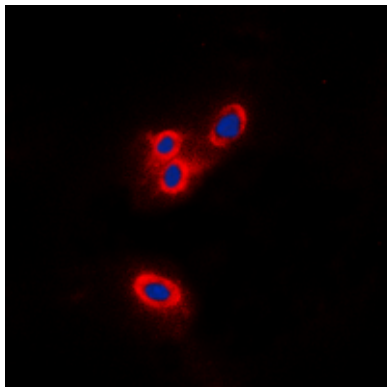
### Images

---

Western blot analysis of Merlin expression in Hela (A), H1688 (B) whole cell lysates.



Immunohistochemical analysis of Merlin staining in human breast cancer formalin fixed paraffin embedded tissue section. The section was pre-treated using heat mediated antigen retrieval with sodium citrate buffer (pH 6.0). The section was then incubated with the antibody at room temperature and detected using an HRP conjugated compact polymer system. DAB was used as the chromogen. The section was then counterstained with haematoxylin and mounted with DPX.



Immunofluorescent analysis of Merlin staining in MCF7 cells. Formalin-fixed cells were permeabilized with 0.1% Triton X-100 in TBS for 5-10 minutes and blocked with 3% BSA-PBS for 30 minutes at room temperature. Cells were probed with the primary antibody in 3% BSA-PBS and incubated overnight at 4 °C in a hidified chamber. Cells were washed with PBST and incubated with a DyLight 594-conjugated secondary antibody (red) in PBS at room temperature in the dark. DAPI was used to stain the cell nuclei (blue).

Please note: All products are 'FOR RESEARCH USE ONLY. NOT FOR USE IN DIAGNOSTIC OR THERAPEUTIC PROCEDURES'.