

# Anti-Laminin gamma 3 Antibody

Rabbit polyclonal antibody to Laminin gamma 3

Catalog # AP60478

## Product Information

---

<b>Application</b>	WB
<b>Primary Accession</b>	<a href="#">Q9Y6N6</a>
<b>Reactivity</b>	Human
<b>Host</b>	Rabbit
<b>Clonality</b>	Polyclonal
<b>Calculated MW</b>	171227

## Additional Information

---

<b>Gene ID</b>	10319
<b>Other Names</b>	Laminin subunit gamma-3; Laminin-12 subunit gamma; Laminin-14 subunit gamma; Laminin-15 subunit gamma
<b>Target/Specificity</b>	KLH-conjugated synthetic peptide encompassing a sequence within the C-term region of human Laminin gamma 3. The exact sequence is proprietary.
<b>Dilution</b>	WB~~WB (1/500 - 1/1000)
<b>Format</b>	Liquid in 0.42% Potassium phosphate, 0.87% Sodium chloride, pH 7.3, 30% glycerol, and 0.09% (W/V) sodium azide.
<b>Storage</b>	Store at -20 °C.Stable for 12 months from date of receipt

## Protein Information

---

<b>Name</b>	LAMC3
<b>Function</b>	Binding to cells via a high affinity receptor, laminin is thought to mediate the attachment, migration and organization of cells into tissues during embryonic development by interacting with other extracellular matrix components.
<b>Cellular Location</b>	Secreted, extracellular space, extracellular matrix, basement membrane
<b>Tissue Location</b>	Broadly expressed in: skin, heart, lung, and the reproductive tracts

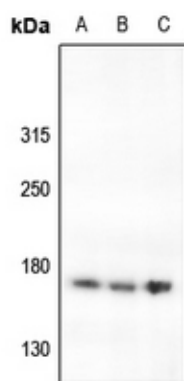
## Background

---

KLH-conjugated synthetic peptide encompassing a sequence within the C-term region of human Laminin gamma 3. The exact sequence is proprietary.

## Images

---



Western blot analysis of Laminin gamma 3 expression in A549 (A), PC3 (B), A2780 (C) whole cell lysates.

Please note: All products are 'FOR RESEARCH USE ONLY. NOT FOR USE IN DIAGNOSTIC OR THERAPEUTIC PROCEDURES'.