

# Anti-EPN2 Antibody

Rabbit polyclonal antibody to EPN2  
Catalog # AP60457

## Product Information

---

<b>Application</b>	WB, IHC
<b>Primary Accession</b>	<a href="#">Q95208</a>
<b>Other Accession</b>	<a href="#">Q8CHU3</a>
<b>Reactivity</b>	Human, Mouse, Rat, Zebrafish, Monkey, Bovine
<b>Host</b>	Rabbit
<b>Clonality</b>	Polyclonal
<b>Calculated MW</b>	68482

## Additional Information

---

<b>Gene ID</b>	22905
<b>Other Names</b>	KIAA1065; Epsin-2; EPS-15-interacting protein 2
<b>Target/Specificity</b>	KLH-conjugated synthetic peptide encompassing a sequence within the center region of human EPN2. The exact sequence is proprietary.
<b>Dilution</b>	WB~~WB (1/500 - 1/1000), IHC (1/100 - 1/200) IHC~~WB (1/500 - 1/1000), IHC (1/100 - 1/200)
<b>Format</b>	Liquid in 0.42% Potassium phosphate, 0.87% Sodium chloride, pH 7.3, 30% glycerol, and 0.09% (W/V) sodium azide.
<b>Storage</b>	Store at -20 °C. Stable for 12 months from date of receipt

## Protein Information

---

<b>Name</b>	EPN2
<b>Synonyms</b>	KIAA1065
<b>Function</b>	Plays a role in the formation of clathrin-coated invaginations and endocytosis.
<b>Cellular Location</b>	Cytoplasm. Cytoplasmic vesicle, clathrin-coated vesicle. Note=In punctate structures throughout the cell, associated with clathrin-coated vesicles, and particularly concentrated in the region of the Golgi complex
<b>Tissue Location</b>	Highest expression is found in brain. Detected at lower levels in lung and liver.

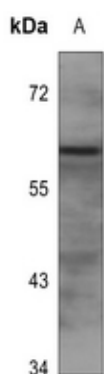
## Background

---

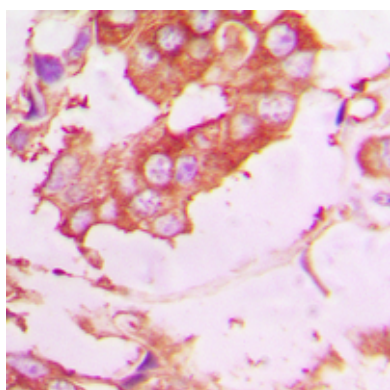
KLH-conjugated synthetic peptide encompassing a sequence within the center region of human EPN2. The exact sequence is proprietary.

## Images

---



Western blot analysis of EPN2 expression in rat liver (A) whole cell lysates.



Immunohistochemical analysis of EPN2 staining in human lung cancer formalin fixed paraffin embedded tissue section. The section was pre-treated using heat mediated antigen retrieval with sodium citrate buffer (pH 6.0). The section was then incubated with the antibody at room temperature and detected using an HRP conjugated compact polymer system. DAB was used as the chromogen. The section was then counterstained with haematoxylin and mounted with DPX.

Please note: All products are 'FOR RESEARCH USE ONLY. NOT FOR USE IN DIAGNOSTIC OR THERAPEUTIC PROCEDURES'.