

Anti-DAXX (pS668) Antibody

Rabbit polyclonal antibody to DAXX (pS668)
Catalog # AP60449

Product Information

Application	WB, IHC
Primary Accession	Q9UER7
Other Accession	O35613
Reactivity	Human, Mouse, Rat, Monkey
Host	Rabbit
Clonality	Polyclonal

Additional Information

Other Names	BING2; DAP6; Death domain-associated protein 6; Daxx; hDaxx; ETS1-associated protein 1; EAP1; Fas death domain-associated protein
Target/Specificity	KLH-conjugated synthetic peptide encompassing a sequence within the C-term region of human DAXX (pS668). The exact sequence is proprietary.
Dilution	WB~~WB (1/500 - 1/1000), IHC (1/100 - 1/200) IHC~~WB (1/500 - 1/1000), IHC (1/100 - 1/200)
Format	Liquid in 0.42% Potassium phosphate, 0.87% Sodium chloride, pH 7.3, 30% glycerol, and 0.09% (W/V) sodium azide.
Storage	Store at -20 °C. Stable for 12 months from date of receipt

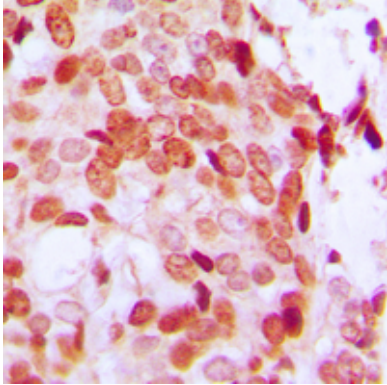
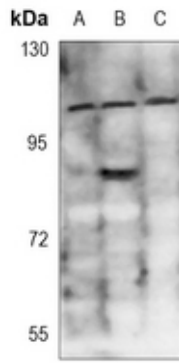
Protein Information

Background

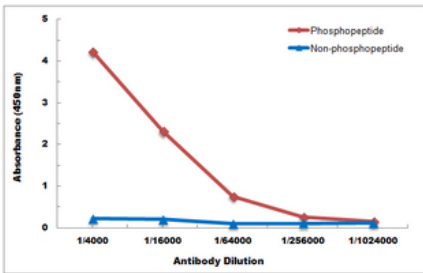
KLH-conjugated synthetic peptide encompassing a sequence within the C-term region of human DAXX (pS668). The exact sequence is proprietary.

Images

Western blot analysis of DAXX (pS668) expression in mouse lung (A), mouse heart (B), rat lung (C) whole cell lysates.



Immunohistochemical analysis of DAXX (pS668) staining in human breast cancer formalin fixed paraffin embedded tissue section. The section was pre-treated using heat mediated antigen retrieval with sodium citrate buffer (pH 6.0). The section was then incubated with the antibody at room temperature and detected using an HRP conjugated compact polymer system. DAB was used as the chromogen. The section was then counterstained with haematoxylin and mounted with DPX.



Direct ELISA antibody dose-response curve using Anti-DAXX (pS668) Antibody. Antigen (phosphopeptide and non-phosphopeptide) concentration is 5 ug/ml. Goat Anti-Rabbit IgG (H&L) - HRP was used as the secondary antibody, and signal was developed by TMB substrate.

Please note: All products are 'FOR RESEARCH USE ONLY. NOT FOR USE IN DIAGNOSTIC OR THERAPEUTIC PROCEDURES'.