

Anti-Cytochrome c1 Antibody

Rabbit polyclonal antibody to Cytochrome c1
Catalog # AP60447

Product Information

Application	WB
Primary Accession	P08574
Reactivity	Human, Bovine
Host	Rabbit
Clonality	Polyclonal

Additional Information

Other Names	Cytochrome c1, heme protein mitochondrial; Complex III subunit 4; Complex III subunit IV; Cytochrome b-c1 complex subunit 4; Ubiquinol-cytochrome-c reductase complex cytochrome c1 subunit; Cytochrome c-1
Target/Specificity	KLH-conjugated synthetic peptide encompassing a sequence within the center region of human Cytochrome c1. The exact sequence is proprietary.
Dilution	WB--WB (1/500 - 1/1000)
Format	Liquid in 0.42% Potassium phosphate, 0.87% Sodium chloride, pH 7.3, 30% glycerol, and 0.09% (W/V) sodium azide.
Storage	Store at -20 °C. Stable for 12 months from date of receipt

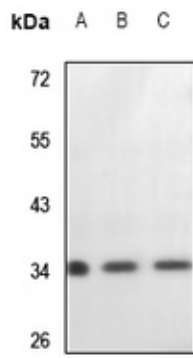
Protein Information

Background

KLH-conjugated synthetic peptide encompassing a sequence within the center region of human Cytochrome c1. The exact sequence is proprietary.

Images

Western blot analysis of Cytochrome c1 expression in LO2 (A), A549 (B), MCF7 (C) whole cell lysates.



Please note: All products are 'FOR RESEARCH USE ONLY. NOT FOR USE IN DIAGNOSTIC OR THERAPEUTIC PROCEDURES'.