

Anti-ATG16L2 Antibody

Rabbit polyclonal antibody to ATG16L2

Catalog # AP60428

Product Information

Application	WB
Primary Accession	Q8NAA4
Other Accession	Q6KAU8
Reactivity	Human, Mouse, Rat
Host	Rabbit
Clonality	Polyclonal
Calculated MW	68998

Additional Information

Gene ID	89849
Other Names	WDR80; Autophagy-related protein 16-2; APG16-like 2; WD repeat-containing protein 80
Target/Specificity	KLH-conjugated synthetic peptide encompassing a sequence within the center region of human ATG16L2. The exact sequence is proprietary.
Dilution	WB~~WB (1/500 - 1/1000)
Format	Liquid in 0.42% Potassium phosphate, 0.87% Sodium chloride, pH 7.3, 30% glycerol, and 0.09% (W/V) sodium azide.
Storage	Store at -20 °C.Stable for 12 months from date of receipt

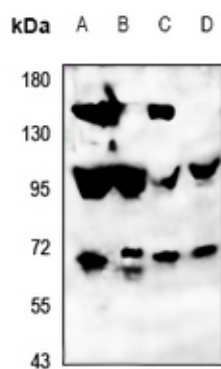
Protein Information

Name	ATG16L2
Synonyms	WDR80
Function	May play a role in regulating epithelial homeostasis in an ATG16L1-dependent manner.
Cellular Location	Cytoplasm, cytosol {ECO:0000250 UniProtKB:Q6KAU8}. Note=Also localizes to discrete punctae along the ciliary axoneme. {ECO:0000250 UniProtKB:Q6KAU8}

Background

KLH-conjugated synthetic peptide encompassing a sequence within the center region of human ATG16L2. The exact sequence is proprietary.

Images



Western blot analysis of ATG16L2 expression in HeLa (A), MCF7 (B), C6 (C), MEF (D) whole cell lysates.

Please note: All products are 'FOR RESEARCH USE ONLY. NOT FOR USE IN DIAGNOSTIC OR THERAPEUTIC PROCEDURES'.