

# Anti-CD252 Antibody

Rabbit polyclonal antibody to CD252

Catalog # AP60408

## Product Information

---

|                          |                        |
|--------------------------|------------------------|
| <b>Application</b>       | WB                     |
| <b>Primary Accession</b> | <a href="#">P23510</a> |
| <b>Other Accession</b>   | <a href="#">P43488</a> |
| <b>Reactivity</b>        | Human, Mouse, Rat      |
| <b>Host</b>              | Rabbit                 |
| <b>Clonality</b>         | Polyclonal             |
| <b>Calculated MW</b>     | 21050                  |

## Additional Information

---

|                           |  |
|---------------------------|--|
| <b>Gene ID</b>            | 7292   |
| <b>Other Names</b>        | TXGP1; Tumor necrosis factor ligand superfamily member 4; Glycoprotein Gp34; OX40 ligand; OX40L; TAX transcriptionally-activated glycoprotein 1; CD252 |
| <b>Target/Specificity</b> | KLH-conjugated synthetic peptide encompassing a sequence within the center region of human CD252. The exact sequence is proprietary.                   |
| <b>Dilution</b>           | WB~~WB (1/500 - 1/1000)  |
| <b>Format</b>             | Liquid in 0.42% Potassium phosphate, 0.87% Sodium chloride, pH 7.3, 30% glycerol, and 0.09% (W/V) sodium azide.  |
| <b>Storage</b>            | Store at -20 °C.Stable for 12 months from date of receipt  |

## Protein Information

---

|                          |   |
|--------------------------|---|
| <b>Name</b>              | TNFSF4  |
| <b>Synonyms</b>          | TXGP1   |
| <b>Function</b>          | Cytokine that binds to TNFRSF4. Co-stimulates T-cell proliferation and cytokine production. |
| <b>Cellular Location</b> | Membrane; Single-pass type II membrane protein.   |

## Background

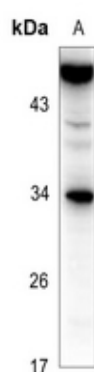
---

KLH-conjugated synthetic peptide encompassing a sequence within the center region of human CD252. The

exact sequence is proprietary.

## Images

---



Western blot analysis of CD252 expression in mouse spleen (A), HEK293T (B) whole cell lysates.

Please note: All products are 'FOR RESEARCH USE ONLY. NOT FOR USE IN DIAGNOSTIC OR THERAPEUTIC PROCEDURES'.