

Anti-CD253 Antibody

Rabbit polyclonal antibody to CD253

Catalog # AP60407

Product Information

Application	WB
Primary Accession	P50591
Other Accession	P50592
Reactivity	Human, Mouse, Rat
Host	Rabbit
Clonality	Polyclonal
Calculated MW	32509

Additional Information

Gene ID	8743
Other Names	APO2L; TRAIL; Tumor necrosis factor ligand superfamily member 10; Apo-2 ligand; Apo-2L; TNF-related apoptosis-inducing ligand; Protein TRAIL; CD253
Target/Specificity	KLH-conjugated synthetic peptide encompassing a sequence within the center region of human CD253. The exact sequence is proprietary.
Dilution	WB~~WB (1/500 - 1/1000)
Format	Liquid in 0.42% Potassium phosphate, 0.87% Sodium chloride, pH 7.3, 30% glycerol, and 0.09% (W/V) sodium azide.
Storage	Store at -20 °C.Stable for 12 months from date of receipt

Protein Information

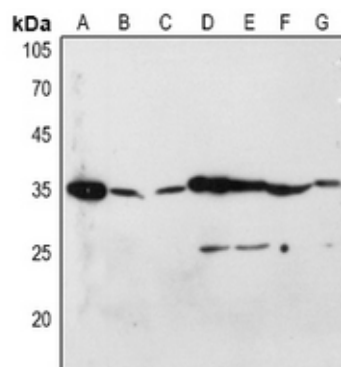
Name	TNFSF10
Synonyms	APO2L, TRAIL
Function	Cytokine that binds to TNFRSF10A/TRAILR1, TNFRSF10B/TRAILR2, TNFRSF10C/TRAILR3, TNFRSF10D/TRAILR4 and possibly also to TNFRSF11B/OPG (PubMed: 10549288 , PubMed: 26457518). Induces apoptosis. Its activity may be modulated by binding to the decoy receptors TNFRSF10C/TRAILR3, TNFRSF10D/TRAILR4 and TNFRSF11B/OPG that cannot induce apoptosis.
Cellular Location	Cell membrane; Single-pass type II membrane protein. Secreted. Note=Exists both as membrane-bound and soluble form. Widespread; most predominant in spleen, lung and prostate

Tissue Location

Background

KLH-conjugated synthetic peptide encompassing a sequence within the center region of human CD253. The exact sequence is proprietary.

Images



Western blot analysis of CD253 expression in HEK293T (A), Hela (B), H460 (C), mouse kidney (D), mouse testis (E), rat kidney (F), rat testis (G) whole cell lysates.

Please note: All products are 'FOR RESEARCH USE ONLY. NOT FOR USE IN DIAGNOSTIC OR THERAPEUTIC PROCEDURES'.