

Anti-CD134 Antibody

Rabbit polyclonal antibody to CD134
Catalog # AP60406

Product Information

Application	WB
Primary Accession	P43489
Other Accession	P47741
Reactivity	Human, Mouse, Rat
Host	Rabbit
Clonality	Polyclonal

Additional Information

Other Names	TXGP1L; Tumor necrosis factor receptor superfamily member 4; ACT35 antigen; OX40L receptor; TAX transcriptionally-activated glycoprotein 1 receptor; CD134
Target/Specificity	KLH-conjugated synthetic peptide encompassing a sequence within the C-term region of human CD134. The exact sequence is proprietary.
Dilution	WB--WB (1/500 - 1/1000)
Format	Liquid in 0.42% Potassium phosphate, 0.87% Sodium chloride, pH 7.3, 30% glycerol, and 0.09% (W/V) sodium azide.
Storage	Store at -20 °C. Stable for 12 months from date of receipt

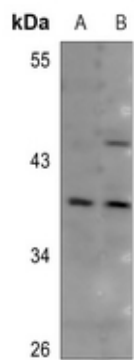
Protein Information

Background

KLH-conjugated synthetic peptide encompassing a sequence within the C-term region of human CD134. The exact sequence is proprietary.

Images

Western blot analysis of CD134 expression in mouse spleen (A), rat spleen (B) whole cell lysates.



Please note: All products are 'FOR RESEARCH USE ONLY. NOT FOR USE IN DIAGNOSTIC OR THERAPEUTIC PROCEDURES'.