

Anti-MCT4 Antibody

Rabbit polyclonal antibody to MCT4
Catalog # AP60395

Product Information

Application	WB
Primary Accession	O15427
Other Accession	P57787
Reactivity	Human, Mouse, Rat, Pig
Host	Rabbit
Clonality	Polyclonal
Calculated MW	49469

Additional Information

Gene ID	9123
Other Names	MCT4; Monocarboxylate transporter 4; MCT 4; Solute carrier family 16 member 3
Target/Specificity	KLH-conjugated synthetic peptide encompassing a sequence within the center region of human MCT4. The exact sequence is proprietary.
Dilution	WB--WB (1/500 - 1/1000)
Format	Liquid in 0.42% Potassium phosphate, 0.87% Sodium chloride, pH 7.3, 30% glycerol, and 0.09% (W/V) sodium azide.
Storage	Store at -20 °C. Stable for 12 months from date of receipt

Protein Information

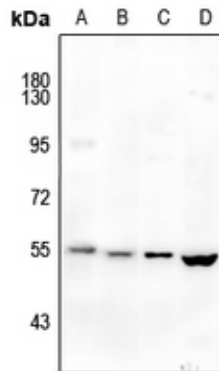
Name	SLC16A3
Synonyms	MCT3 {ECO:0000303 PubMed:9425115}, MCT4
Function	Proton-dependent transporter of monocarboxylates such as L- lactate and pyruvate (PubMed: 11101640 , PubMed: 23935841 , PubMed: 31719150). Plays a predominant role in L-lactate efflux from highly glycolytic cells (By similarity).
Cellular Location	Cell membrane; Multi-pass membrane protein. Basolateral cell membrane; Multi-pass membrane protein. Note=Plasma membrane localization is dependent upon the BSG/MCT4 interaction (PubMed:10921872). Basolateral sorting signals (BLSS) in C-terminal cytoplasmic tail ensure its basolateral expression in polarised epithelial cells (PubMed:21199217) Highly expressed in skeletal muscle.

Tissue Location

Background

KLH-conjugated synthetic peptide encompassing a sequence within the center region of human MCT4. The exact sequence is proprietary.

Images



Western blot analysis of MCT4 expression in CT26 (A), C6 (B), mouse muscle (C), rat brain (D) whole cell lysates.

Please note: All products are 'FOR RESEARCH USE ONLY. NOT FOR USE IN DIAGNOSTIC OR THERAPEUTIC PROCEDURES'.