

# Anti-Inhibin alpha Antibody

Rabbit polyclonal antibody to Inhibin alpha

Catalog # AP60326

## Product Information

---

<b>Application</b>	WB
<b>Primary Accession</b>	<a href="#">P05111</a>
<b>Other Accession</b>	<a href="#">Q04997</a>
<b>Reactivity</b>	Human, Mouse, Rat, Rabbit, Bovine, SARS
<b>Host</b>	Rabbit
<b>Clonality</b>	Polyclonal
<b>Calculated MW</b>	39670

## Additional Information

---

<b>Gene ID</b>	3623
<b>Other Names</b>	Inhibin alpha chain
<b>Target/Specificity</b>	KLH-conjugated synthetic peptide encompassing a sequence within the center region of human Inhibin alpha. The exact sequence is proprietary.
<b>Dilution</b>	WB~~WB (1/500 - 1/1000)
<b>Format</b>	Liquid in 0.42% Potassium phosphate, 0.87% Sodium chloride, pH 7.3, 30% glycerol, and 0.09% (W/V) sodium azide.
<b>Storage</b>	Store at -20 °C.Stable for 12 months from date of receipt

## Protein Information

---

<b>Name</b>	INHA
<b>Function</b>	Inhibins and activins inhibit and activate, respectively, the secretion of follitropin by the pituitary gland. Inhibins/activins are involved in regulating a number of diverse functions such as hypothalamic and pituitary hormone secretion, gonadal hormone secretion, germ cell development and maturation, erythroid differentiation, insulin secretion, nerve cell survival, embryonic axial development or bone growth, depending on their subunit composition. Inhibins appear to oppose the functions of activins. Inhibin B is a dimer of alpha and beta-B that plays a crucial role in the regulation of the reproductive system by inhibiting the secretion of follicle-stimulating hormone (FSH) from the anterior pituitary gland. Thereby, maintains reproductive homeostasis in both males and females. Acts as a more potent suppressor of FSH release than inhibin A (By similarity). Functions as competitive receptor antagonist binding activin type II receptors with high affinity in the presence of the TGF-beta type III coreceptor/TGFB3L

(PubMed:[34910520](#)).

**Cellular Location**

Secreted {ECO:0000250|UniProtKB:P17490}.

**Tissue Location**

Originally found in ovary (granulosa cells) and testis (Sertoli cells), but widely distributed in many tissues including brain and placenta. In adrenal cortex expression is limited to the zona reticularis and the innermost zona fasciculata in the normal gland, extending centripetally into the zona fasciculata in hyperplasia. Also found in adrenocortical tumors. Also expressed in prostate epithelium of benign prostatic hyperplasia, in regions of basal cell hyperplasia and in nonmalignant regions of high grade prostate cancer. Only circulating inhibin B is found in male, whereas circulating inhibins A and B are found in female

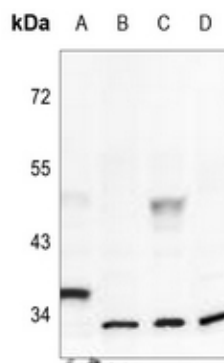
**Background**

---

KLH-conjugated synthetic peptide encompassing a sequence within the center region of human Inhibin alpha. The exact sequence is proprietary.

**Images**

---



Western blot analysis of Inhibin alpha expression in rat ovary (A), PC3 (B), H9C2 (C), BV2 (D) whole cell lysates.

Please note: All products are 'FOR RESEARCH USE ONLY. NOT FOR USE IN DIAGNOSTIC OR THERAPEUTIC PROCEDURES'.