

Anti-GIT2 Antibody

Rabbit polyclonal antibody to GIT2

Catalog # AP60294

Product Information

Application	WB
Primary Accession	Q14161
Other Accession	Q9JLQ2
Reactivity	Human, Mouse, Rat, Chicken
Host	Rabbit
Clonality	Polyclonal
Calculated MW	84543

Additional Information

Gene ID	9815
Other Names	KIAA0148; ARF GTPase-activating protein GIT2; ARF GAP GIT2; Cool-interacting tyrosine-phosphorylated protein 2; CAT-2; CAT2; G protein-coupled receptor kinase-interactor 2; GRK-interacting protein 2
Target/Specificity	KLH-conjugated synthetic peptide encompassing a sequence within the center region of human GIT2. The exact sequence is proprietary.
Dilution	WB~~WB (1/500 - 1/1000)
Format	Liquid in 0.42% Potassium phosphate, 0.87% Sodium chloride, pH 7.3, 30% glycerol, and 0.09% (W/V) sodium azide.
Storage	Store at -20 °C.Stable for 12 months from date of receipt

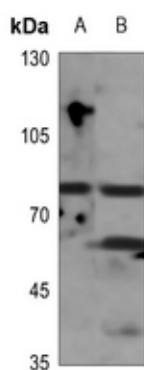
Protein Information

Name	GIT2
Synonyms	KIAA0148
Function	GTPase-activating protein for ADP ribosylation factor family members, including ARF1.

Background

KLH-conjugated synthetic peptide encompassing a sequence within the center region of human GIT2. The exact sequence is proprietary.

Images



Western blot analysis of GIT2 expression in mouse kidney (A), rat kidney (B) whole cell lysates.

Please note: All products are 'FOR RESEARCH USE ONLY. NOT FOR USE IN DIAGNOSTIC OR THERAPEUTIC PROCEDURES'.