

Anti-EEF2 (pT56) Antibody

Rabbit polyclonal antibody to EEF2 (pT56)
Catalog # AP60272

Product Information

Application	WB, IF/IC, IHC
Primary Accession	P13639
Other Accession	P58252
Reactivity	Human, Mouse, Rat, Zebrafish, Monkey, Chicken, Bovine
Host	Rabbit
Clonality	Polyclonal
Calculated MW	95338

Additional Information

Gene ID	1938
Other Names	EF2; Elongation factor 2; EF-2
Target/Specificity	KLH-conjugated synthetic peptide encompassing a sequence within the N-term region of human EEF2 (pT56). The exact sequence is proprietary.
Dilution	WB~~WB (1/500 - 1/1000), IHC (1/100 - 1/200), IF/IC (1/100 - 1/500) IF/IC~~N/A IHC~~WB (1/500 - 1/1000), IHC (1/100 - 1/200), IF/IC (1/100 - 1/500)
Format	Liquid in 0.42% Potassium phosphate, 0.87% Sodium chloride, pH 7.3, 30% glycerol, and 0.09% (W/V) sodium azide.
Storage	Store at -20 °C. Stable for 12 months from date of receipt

Protein Information

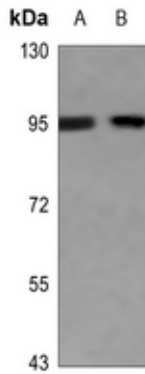
Name	EEF2
Synonyms	EF2
Function	Catalyzes the GTP-dependent ribosomal translocation step during translation elongation (PubMed: 26593721). During this step, the ribosome changes from the pre-translocational (PRE) to the post-translocational (POST) state as the newly formed A-site-bound peptidyl- tRNA and P-site-bound deacylated tRNA move to the P and E sites, respectively (PubMed: 26593721). Catalyzes the coordinated movement of the two tRNA molecules, the mRNA and conformational changes in the ribosome (PubMed: 26593721).
Cellular Location	Cytoplasm. Nucleus. Note=Phosphorylation by CSK promotes cleavage and SUMOylation-dependent nuclear translocation of the C-terminal cleavage

product.

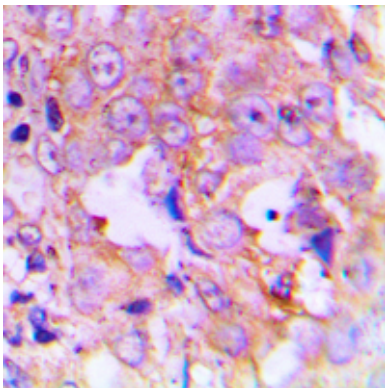
Background

KLH-conjugated synthetic peptide encompassing a sequence within the N-term region of human EEF2 (pT56). The exact sequence is proprietary.

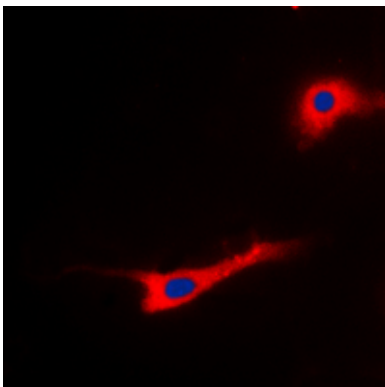
Images



Western blot analysis of EEF2 (pT56) expression in DLD (A), U2OS (B) whole cell lysates.



Immunohistochemical analysis of EEF2 (pT56) staining in human lung cancer formalin fixed paraffin embedded tissue section. The section was pre-treated using heat mediated antigen retrieval with sodium citrate buffer (pH 6.0). The section was then incubated with the antibody at room temperature and detected using an HRP conjugated compact polymer system. DAB was used as the chromogen. The section was then counterstained with haematoxylin and mounted with DPX.



Immunofluorescent analysis of EEF2 (pT56) staining in SKOV3 cells. Formalin-fixed cells were permeabilized with 0.1% Triton X-100 in TBS for 5-10 minutes and blocked with 3% BSA-PBS for 30 minutes at room temperature. Cells were probed with the primary antibody in 3% BSA-PBS and incubated overnight at 4 °C in a humidified chamber. Cells were washed with PBST and incubated with a DyLight 594-conjugated secondary antibody (red) in PBS at room temperature in the dark. DAPI was used to stain the cell nuclei (blue).

Please note: All products are 'FOR RESEARCH USE ONLY. NOT FOR USE IN DIAGNOSTIC OR THERAPEUTIC PROCEDURES'.