

# Anti-Endothelin 1 Antibody

Rabbit polyclonal antibody to Endothelin 1  
Catalog # AP60271

## Product Information

Application	WB
Primary Accession	<a href="#">P05305</a>
Other Accession	<a href="#">P22387</a>
Reactivity	Human, Rat
Host	Rabbit
Clonality	Polyclonal
Calculated MW	24425

## Additional Information

Gene ID	1906
Other Names	Endothelin-1; Preproendothelin-1; PPET1
Target/Specificity	KLH-conjugated synthetic peptide encompassing a sequence within the center region of human Endothelin 1. The exact sequence is proprietary.
Dilution	WB~~WB (1/500 - 1/1000)
Format	Liquid in 0.42% Potassium phosphate, 0.87% Sodium chloride, pH 7.3, 30% glycerol, and 0.09% (W/V) sodium azide.
Storage	Store at -20 °C.Stable for 12 months from date of receipt

## Protein Information

Name	EDN1
Function	Endothelins are endothelium-derived vasoconstrictor peptides (By similarity). Probable ligand for G-protein coupled receptors EDNRA and EDNRB which activates PTK2B, BCAR1, BCAR3 and, GTPases RAP1 and RHOA cascade in glomerular mesangial cells (PubMed: <a href="#">19086031</a> ). Also binds the DEAR/FBXW7-AS1 receptor (PubMed: <a href="#">17446437</a> ). Promotes mesenteric arterial wall remodeling via activation of ROCK signaling and subsequent colocalization of NFATC3 with F-actin filaments (By similarity). NFATC3 then translocates to the nucleus where it subsequently promotes the transcription of the smooth muscle hypertrophy and differentiation marker ACTA2 (By similarity).
Cellular Location	Secreted.  Expressed in lung, placental stem villi vessels and in cultured placental

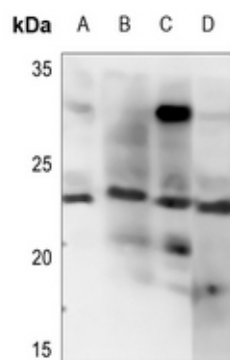
## Background

---

KLH-conjugated synthetic peptide encompassing a sequence within the center region of human Endothelin 1. The exact sequence is proprietary.

## Images

---



Western blot analysis of Endothelin 1 expression in HEK293T (A), LOVO (B), H1792 (C), mouse testis (D) whole cell lysates.

Please note: All products are 'FOR RESEARCH USE ONLY. NOT FOR USE IN DIAGNOSTIC OR THERAPEUTIC PROCEDURES'.