

Anti-CRMP2 (pS522) Antibody

Rabbit polyclonal antibody to CRMP2 (pS522)

Catalog # AP60268

Product Information

Application	WB
Primary Accession	Q16555
Other Accession	O08553
Reactivity	Human, Mouse, Rat, Monkey, Pig, Chicken, Bovine
Host	Rabbit
Clonality	Polyclonal
Calculated MW	62294

Additional Information

Gene ID	1808
Other Names	CRMP2; ULIP2; Dihydropyrimidinase-related protein 2; DRP-2; Collapsin response mediator protein 2; CRMP-2; N2A3; Unc-33-like phosphoprotein 2; ULIP-2
Target/Specificity	KLH-conjugated synthetic peptide encompassing a sequence within the C-term region of human CRMP2 (pS522). The exact sequence is proprietary.
Dilution	WB~~WB (1/500 - 1/1000)
Format	Liquid in 0.42% Potassium phosphate, 0.87% Sodium chloride, pH 7.3, 30% glycerol, and 0.09% (W/V) sodium azide.
Storage	Store at -20 °C.Stable for 12 months from date of receipt

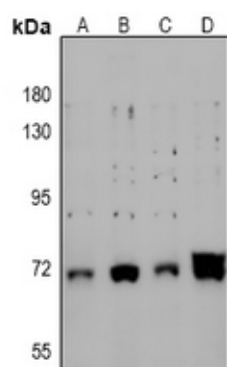
Protein Information

Name	DPYSL2
Synonyms	CRMP2, ULIP2
Function	Plays a role in neuronal development and polarity, as well as in axon growth and guidance, neuronal growth cone collapse and cell migration. Necessary for signaling by class 3 semaphorins and subsequent remodeling of the cytoskeleton. May play a role in endocytosis.
Cellular Location	Cytoplasm, cytosol. Cytoplasm, cytoskeleton. Membrane. Note=Tightly but non-covalently associated with membranes
Tissue Location	Ubiquitous.

Background

KLH-conjugated synthetic peptide encompassing a sequence within the C-term region of human CRMP2 (pS522). The exact sequence is proprietary.

Images



Western blot analysis of CRMP2 (pS522) expression in A375 (A), MCF7 (B), PC12 (C), AML12 (D) whole cell lysates.

Please note: All products are 'FOR RESEARCH USE ONLY. NOT FOR USE IN DIAGNOSTIC OR THERAPEUTIC PROCEDURES'.